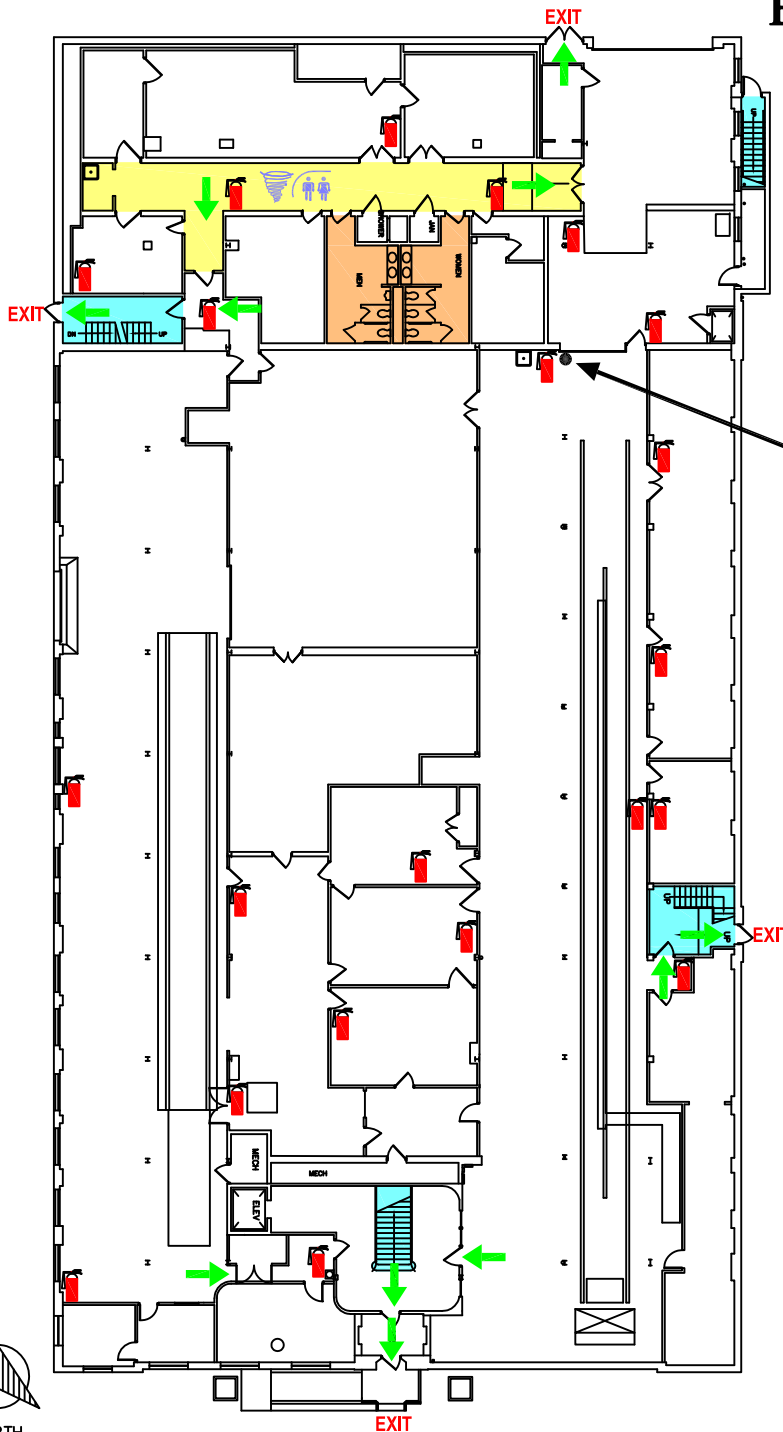


BIOENGINEERING BUILDING









FIRST FLOOR EVACUATION PLAN




YOU ARE HERE

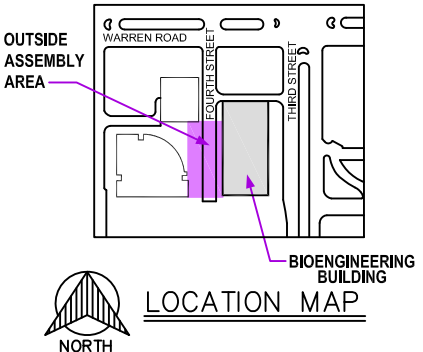
WAYNE STATE UNIVERSITY POLICE DEPARTMENT
EMERGENCY PHONE NUMBER
577-2222

KEY

-  TO STAIRWELL **EXIT**
EXIT AT FIRST FLOOR
-  TORNADO SHELTER AREA
-  STAIRWELL- AREA OF REFUGE
-  OUTSIDE ASSEMBLY AREA
-  REST ROOMS
-  FIRE ALARM PULL BOX
-  FIRE EXTINGUISHER
-  CAMPUS PHONE

EMERGENCY GUIDELINES

- A. FAMILIARIZE YOURSELF WITH ALL  **EXIT** LOCATIONS.
- B. EVACUATE THE BUILDING WHEN THE FIRE ALARM IS ACTIVATED AND PROCEED TO THE **OUTSIDE ASSEMBLY AREA**.
- C. IN CASE OF FIRE, **DO NOT** USE THE ELEVATORS
- D. IN THE EVENT OF SEVERE WEATHER WARNING, PROCEED TO A DESIGNATED **TORNADO SHELTER AREA**, **RESTROOM** OR BASEMENT AS NECESSARY OR INSTRUCTED TO DO SO BY MANAGEMENT.



LOCATION MAP

BIOENGINEERING BUILDING

SECOND FLOOR EVACUATION PLAN

WAYNE STATE UNIVERSITY POLICE DEPARTMENT
EMERGENCY PHONE NUMBER
577-2222

KEY

 TO STAIRWELL **EXIT**
EXIT AT FIRST FLOOR

 TORNADO SHELTER AREA

 STAIRWELL- AREA OF REFUGE

 OUTSIDE ASSEMBLY AREA


 REST ROOMS

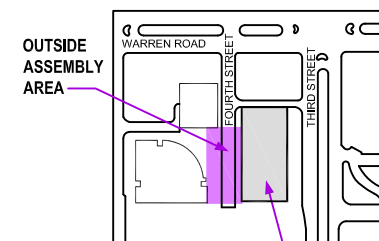
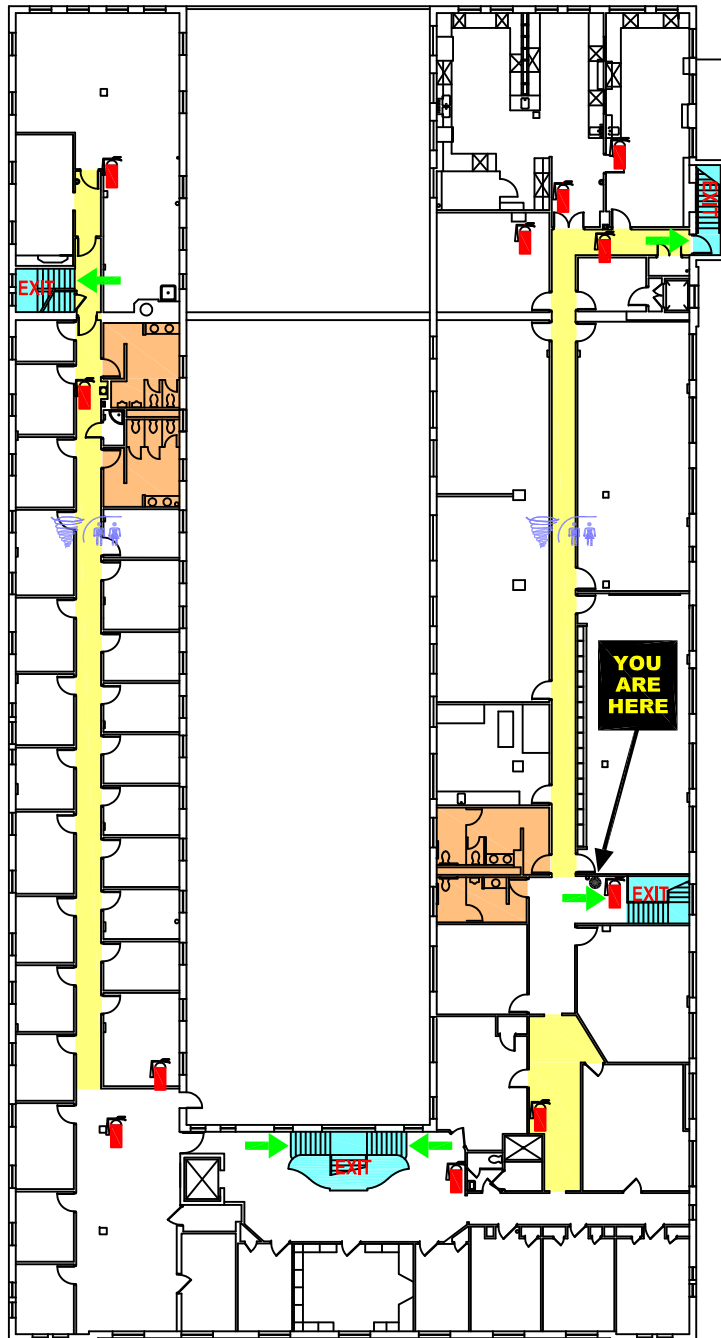
 FIRE ALARM PULL BOX

 FIRE EXTINGUISHER

 CAMPUS PHONE

EMERGENCY GUIDELINES

- FAMILIARIZE YOURSELF WITH ALL  **EXIT** LOCATIONS.
- EVACUATE THE BUILDING WHEN THE FIRE ALARM IS ACTIVATED AND PROCEED TO THE **OUTSIDE ASSEMBLY AREA**.
- IN CASE OF FIRE, **DO NOT** USE THE ELEVATORS
- IN THE EVENT OF SEVERE WEATHER WARNING, PROCEED TO A DESIGNATED **TORNADO SHELTER AREA**, **RESTROOM** OR BASEMENT AS NECESSARY OR INSTRUCTED TO DO SO BY MANAGEMENT.



BIOENGINEERING
BUILDING

LOCATION MAP

