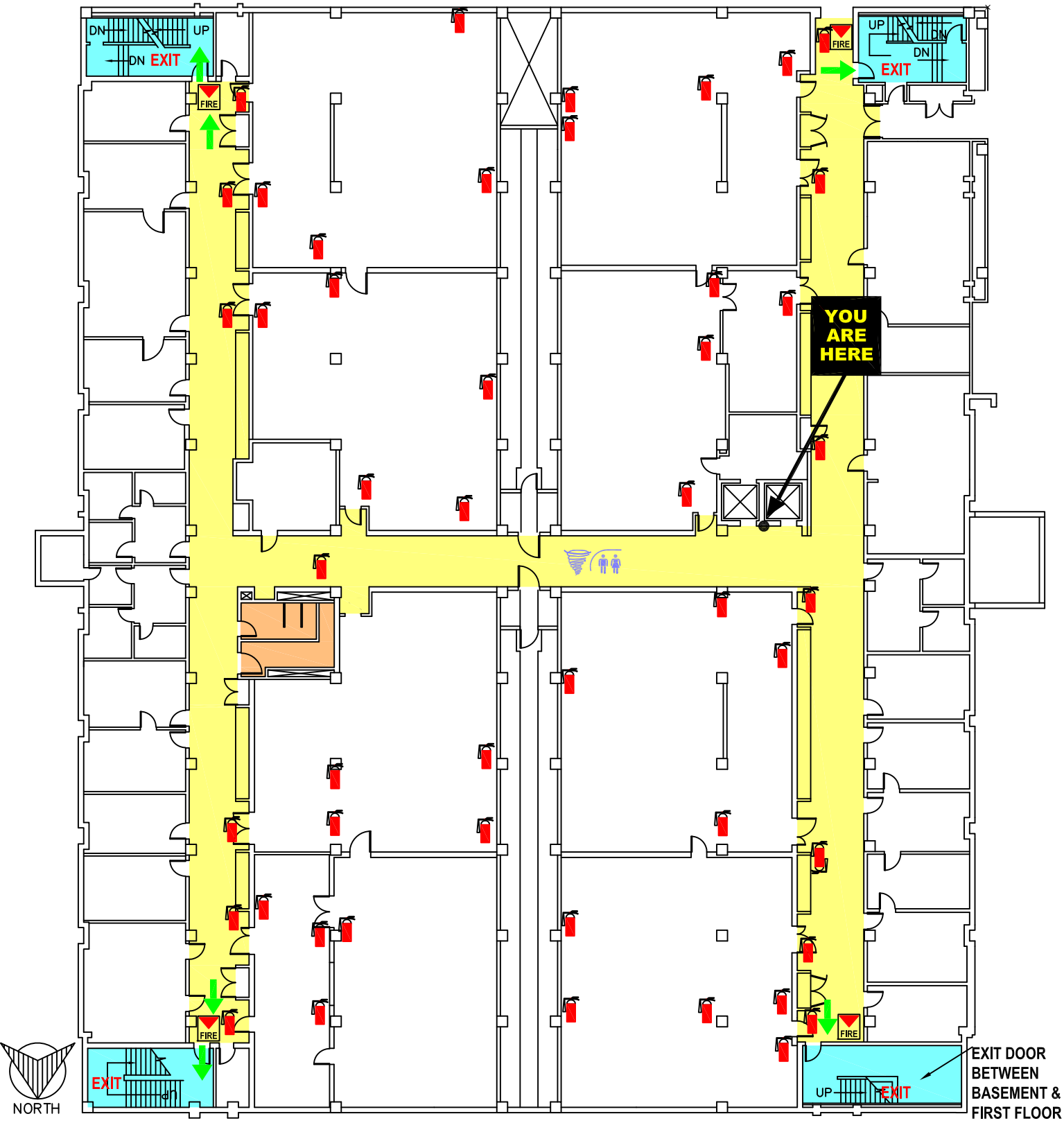


# CHEMISTRY BUILDING

## BASEMENT EVACUATION PLAN

WAYNE STATE UNIVERSITY POLICE DEPARTMENT  
EMERGENCY PHONE NUMBER  
**577-2222**

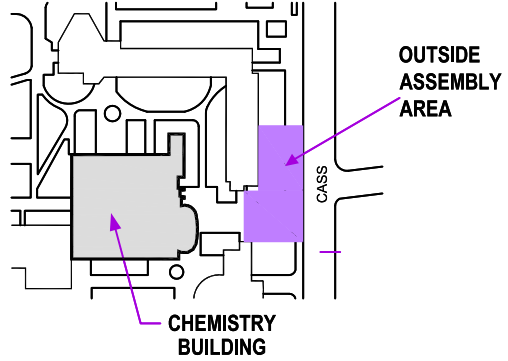


**KEY**

- TO STAIRWELL **EXIT**  
EXIT AT FIRST FLOOR
- TORNADO SHELTER AREA
- STAIRWELL- AREA OF REFUGE
- OUTSIDE ASSEMBLY AREA
- REST ROOMS
- FIRE ALARM PULL BOX
- FIRE EXTINGUISHER
- CAMPUS PHONE

**EMERGENCY GUIDELINES**

- A. FAMILIARIZE YOURSELF WITH ALL **EXIT** LOCATIONS.
- B. EVACUATE THE BUILDING WHEN THE FIRE ALARM IS ACTIVATED AND PROCEED TO THE **OUTSIDE ASSEMBLY AREA**.
- C. IN CASE OF FIRE, **DO NOT** USE THE ELEVATORS
- D. IN THE EVENT OF SEVERE WEATHER WARNING, PROCEED TO A DESIGNATED **TORNADO SHELTER AREA**, **RESTROOM** OR BASEMENT AS NECESSARY OR INSTRUCTED TO DO SO BY MANAGEMENT.



**LOCATION MAP**  
NORTH

EXIT DOOR BETWEEN BASEMENT & FIRST FLOOR

# CHEMISTRY BUILDING



## FIRST FLOOR EVACUATION PLAN

WAYNE STATE UNIVERSITY POLICE DEPARTMENT  
EMERGENCY PHONE NUMBER


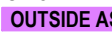


**577-2222**

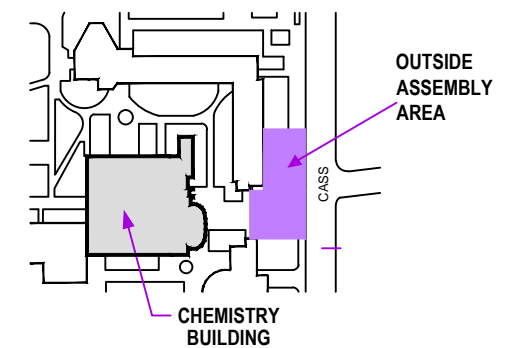
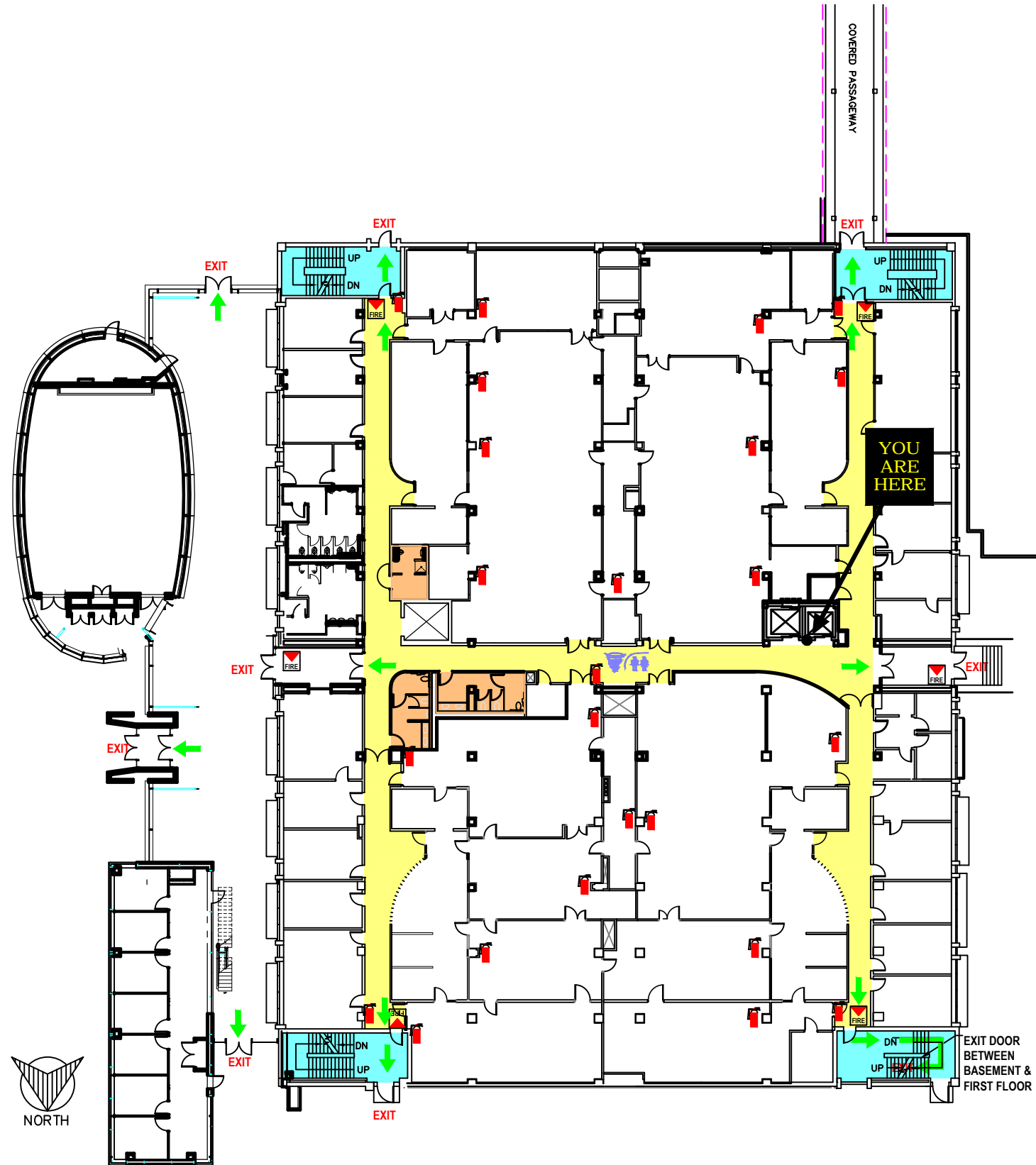
CALL THE ADA COORDINATOR HOTLINE  
**313-577-9973** TO REPORT BARRIERS  
AND ACCESSIBILITY ISSUES

**KEY**

-  TO OUTSIDE EXIT
-  TORNADO SHELTER AREA
-  STAIRWELL- AREA OF REFUGE
-  OUTSIDE ASSEMBLY AREA
-  REST ROOMS
-  FIRE ALARM PULL BOX
-  FIRE EXTINGUISHER

**EMERGENCY GUIDELINES**

- A. FAMILIARIZE YOURSELF WITH ALL  EXIT LOCATIONS.
- B. EVACUATE THE BUILDING WHEN THE FIRE ALARM IS ACTIVATED AND PROCEED TO THE  OUTSIDE ASSEMBLY AREA.
- C. IN CASE OF FIRE, DO NOT USE THE ELEVATORS
- D. IN THE EVENT OF SEVERE WEATHER WARNING, PROCEED TO A DESIGNATED  TORNADO SHELTER AREA ,  RESTROOM OR BASEMENT AS NECESSARY OR INSTRUCTED TO DO SO BY MANAGEMENT.



 LOCATION MAP  
NORTH

# CHEMISTRY BUILDING

## SECOND FLOOR EVACUATION PLAN

WAYNE STATE UNIVERSITY POLICE DEPARTMENT  
EMERGENCY PHONE NUMBER


**577-2222**

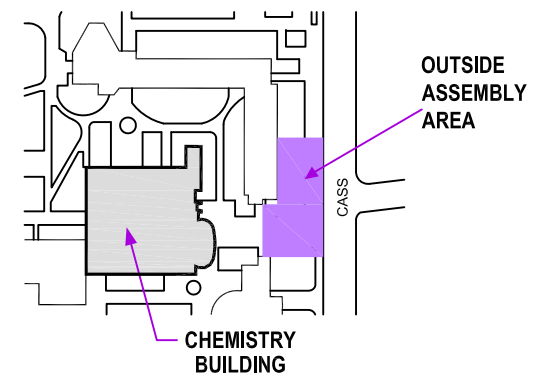
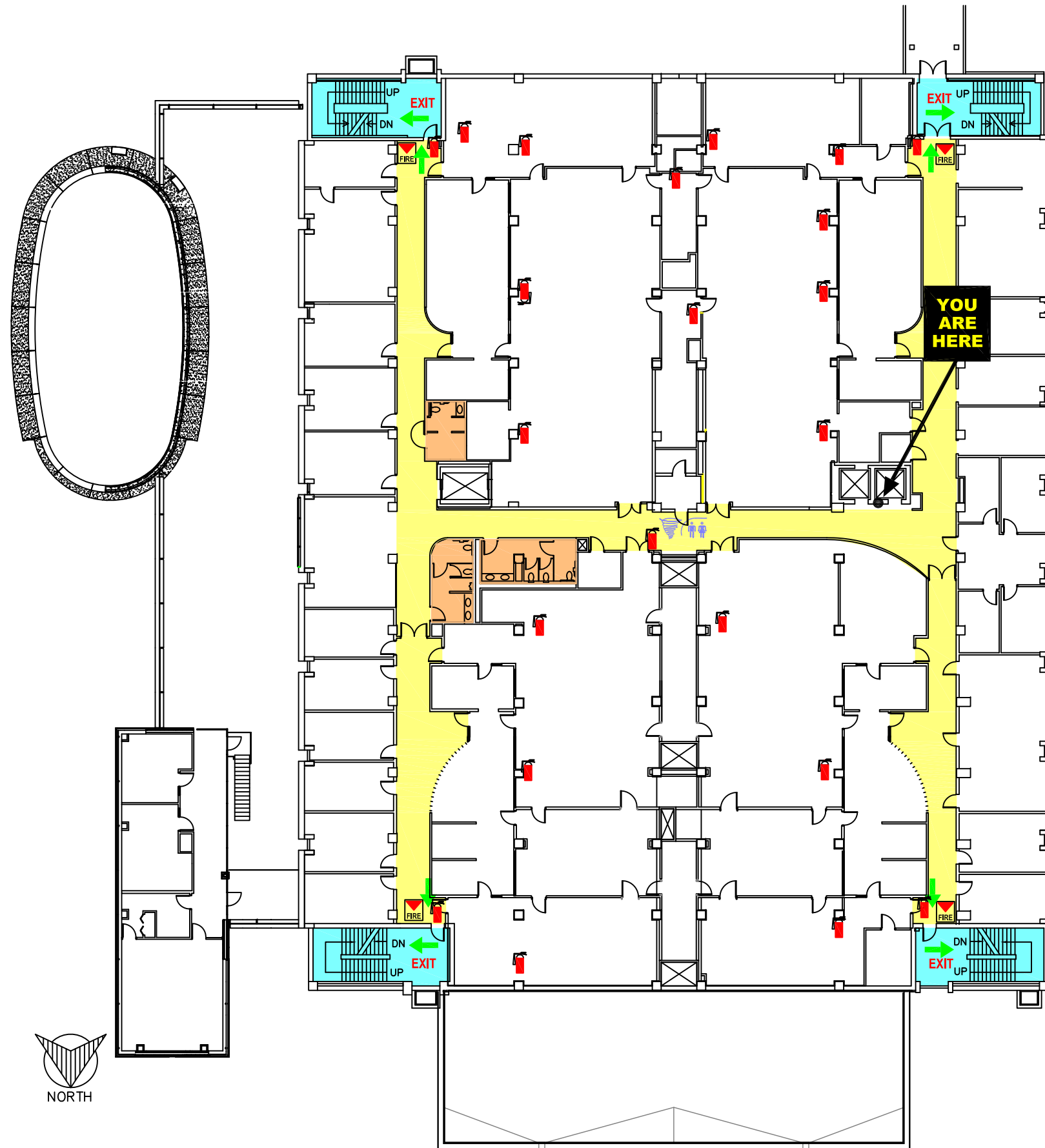
 CALL THE ADA COORDINATOR HOTLINE  
**313-577-9973** TO REPORT BARRIERS  
AND ACCESSIBILITY ISSUES

### KEY

-  TO STAIRWELL **EXIT**  
EXIT AT FIRST FLOOR
-  TORNADO SHELTER AREA
-  STAIRWELL- AREA OF REFUGE
-  OUTSIDE ASSEMBLY AREA
-  REST ROOMS
-  FIRE ALARM PULL BOX
-  FIRE EXTINGUISHER

### EMERGENCY GUIDELINES

- A. FAMILIARIZE YOURSELF WITH ALL  **EXIT** LOCATIONS.
- B. EVACUATE THE BUILDING WHEN THE FIRE ALARM IS ACTIVATED AND PROCEED TO THE **OUTSIDE ASSEMBLY AREA**.
- C. IN CASE OF FIRE, **DO NOT** USE THE ELEVATORS
- D. IN THE EVENT OF SEVERE WEATHER WARNING, PROCEED TO A DESIGNATED **TORNADO SHELTER AREA**, **RESTROOM** OR BASEMENT AS NECESSARY OR INSTRUCTED TO DO SO BY MANAGEMENT.



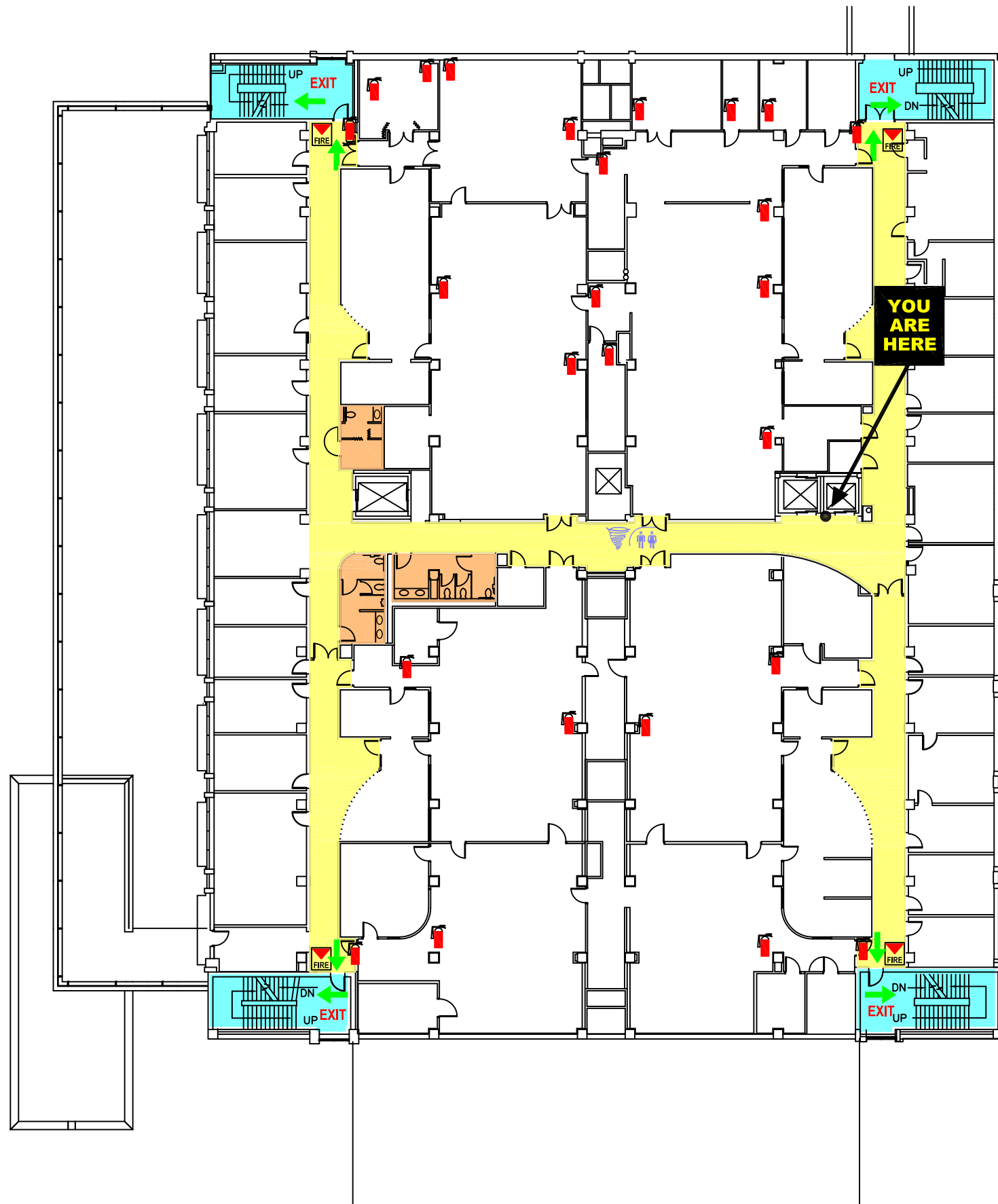
# CHEMISTRY BUILDING

## THIRD FLOOR EVACUATION PLAN

WAYNE STATE UNIVERSITY POLICE DEPARTMENT  
EMERGENCY PHONE NUMBER

**577-2222**

 CALL THE ADA COORDINATOR HOTLINE  
**313-577-9973** TO REPORT BARRIERS  
AND ACCESSIBILITY ISSUES



### KEY

 TO STAIRWELL **EXIT**  
EXIT AT FIRST FLOOR

 TORNADO SHELTER AREA

 STAIRWELL- AREA OF REFUGE


 OUTSIDE ASSEMBLY AREA

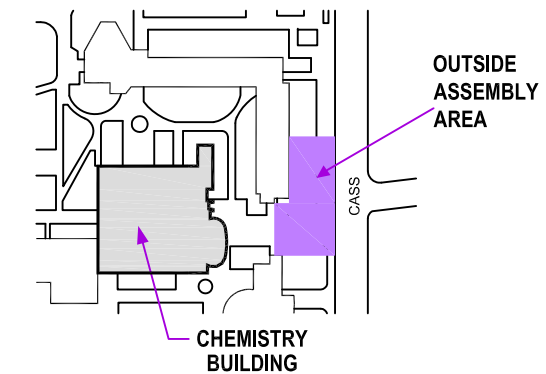
 REST ROOMS

 FIRE ALARM PULL BOX

 FIRE EXTINGUISHER

### EMERGENCY GUIDELINES

- FAMILIARIZE YOURSELF WITH ALL  **EXIT** LOCATIONS.
- EVACUATE THE BUILDING WHEN THE FIRE ALARM IS ACTIVATED AND PROCEED TO THE **OUTSIDE ASSEMBLY AREA**.
- IN CASE OF FIRE, **DO NOT** USE THE ELEVATORS
- IN THE EVENT OF SEVERE WEATHER WARNING, PROCEED TO A DESIGNATED **TORNADO SHELTER AREA**, **RESTROOM** OR BASEMENT AS NECESSARY OR INSTRUCTED TO DO SO BY MANAGEMENT.



 **LOCATION MAP**  
NORTH

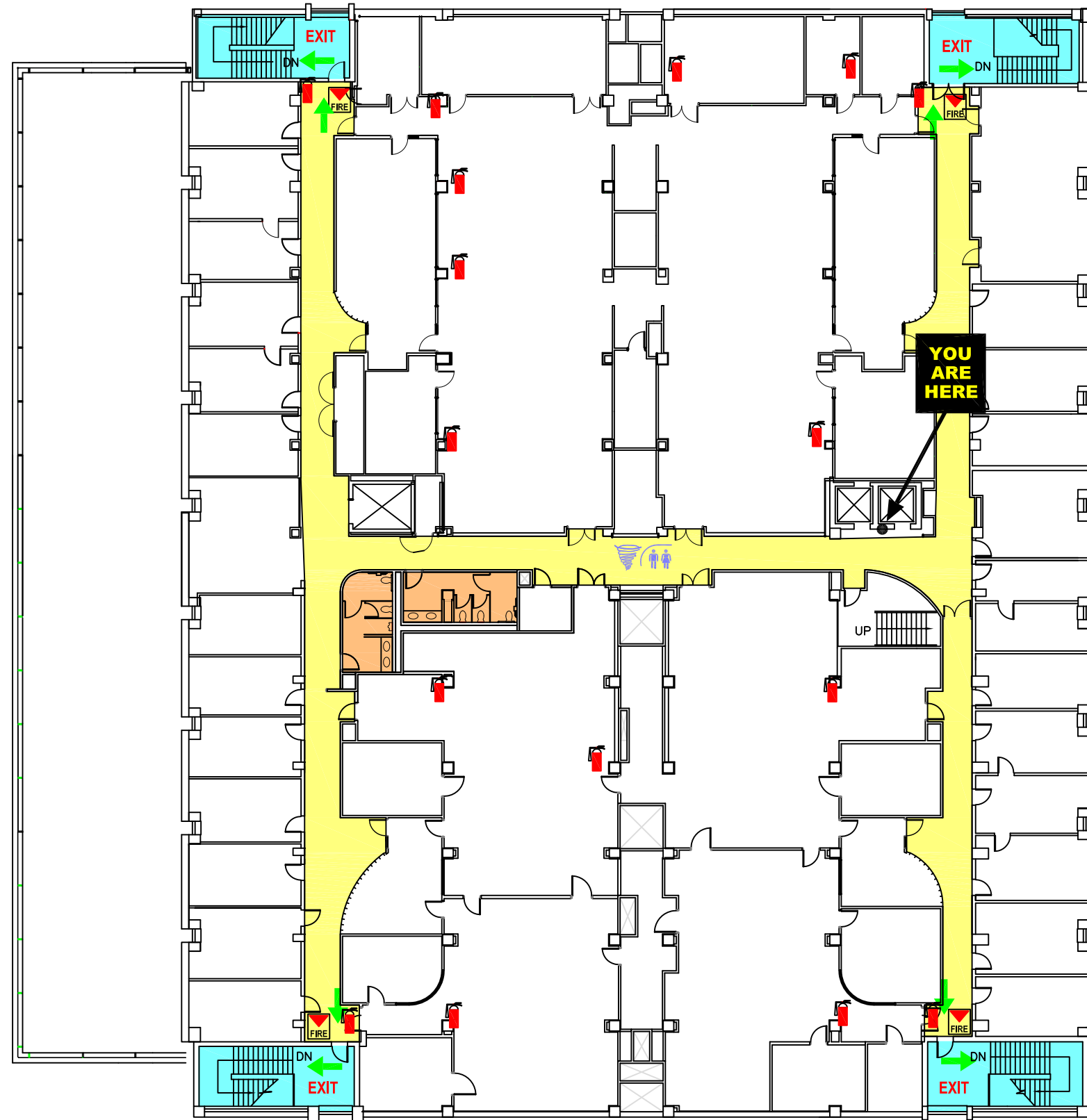


# CHEMISTRY BUILDING







## FOURTH FLOOR EVACUATION PLAN

WAYNE STATE UNIVERSITY POLICE DEPARTMENT  
EMERGENCY PHONE NUMBER  
**577-2222**


 CALL THE ADA COORDINATOR HOTLINE  
**313-577-9973** TO REPORT BARRIERS  
 AND ACCESSIBILITY ISSUES



### KEY

-  TO STAIRWELL **EXIT**  
EXIT AT FIRST FLOOR
-  TORNADO SHELTER AREA
-  STAIRWELL- AREA OF REFUGE
-  OUTSIDE ASSEMBLY AREA
-  REST ROOMS
-  FIRE ALARM PULL BOX
-  FIRE EXTINGUISHER

### EMERGENCY GUIDELINES

- A. FAMILIARIZE YOURSELF WITH ALL  **EXIT** LOCATIONS.
- B. EVACUATE THE BUILDING WHEN THE FIRE ALARM IS ACTIVATED AND PROCEED TO THE **OUTSIDE ASSEMBLY AREA**.
- C. IN CASE OF FIRE, **DO NOT** USE THE ELEVATORS
- D. IN THE EVENT OF SEVERE WEATHER WARNING, PROCEED TO A DESIGNATED **TORNADO SHELTER AREA**, **RESTROOM** OR BASEMENT AS NECESSARY OR INSTRUCTED TO DO SO BY MANAGEMENT.

