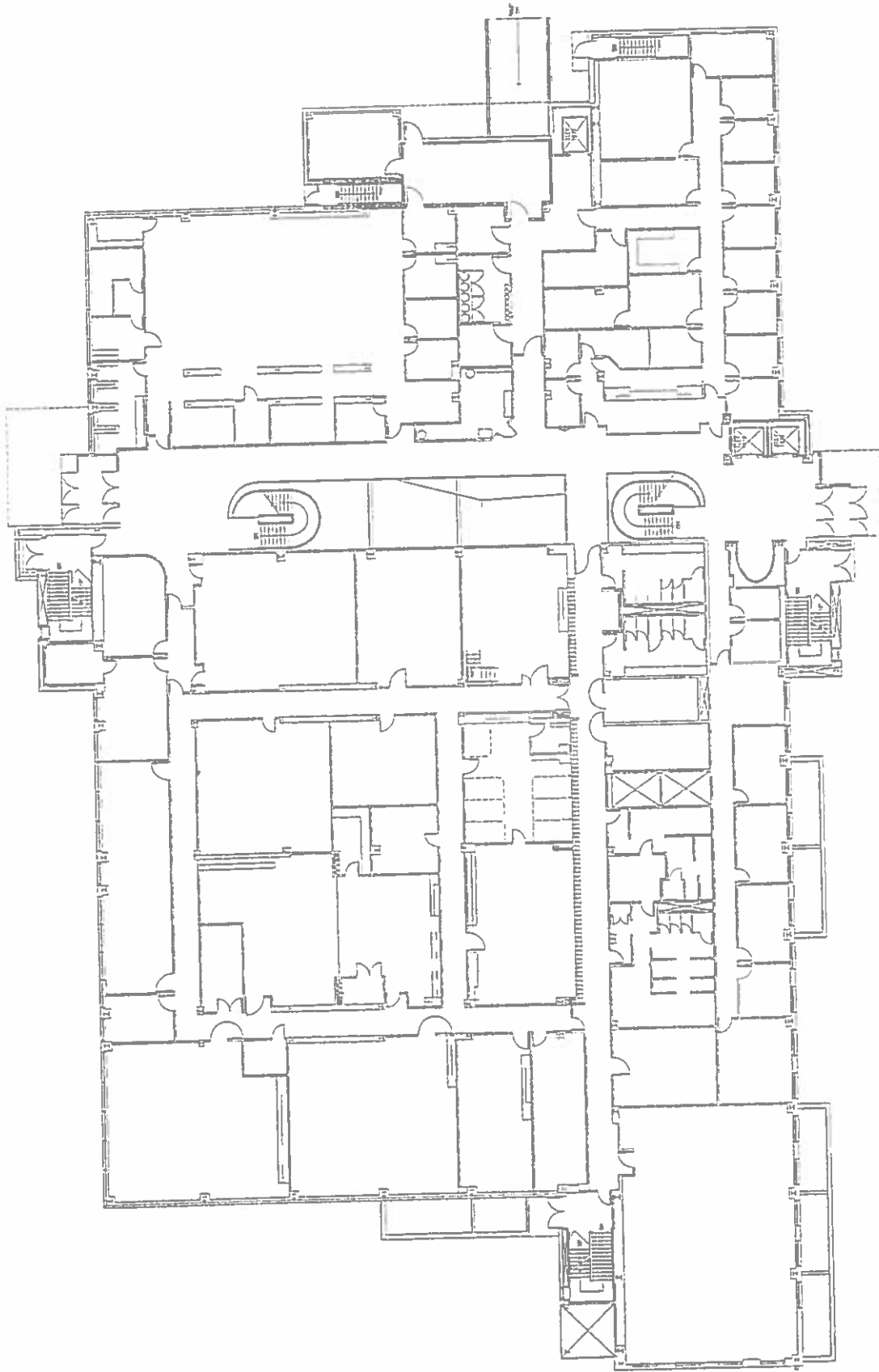


DISCLAIMER:  
 WAYNE STATE UNIVERSITY, FACILITIES PLANNING AND MANAGEMENT  
 MAKES THESE DOCUMENTS AVAILABLE ON AN "AS IS" BASIS.  
 THESE DRAWINGS WERE CREATED USING AUTOCAD FROM AUTODESK AND  
 ARE ACCURATE FOR SPACE MANAGEMENT, 'FLOOR PLAN' USE. THE  
 USERS WILL HOLD HARMLESS WSU, ITS OFFICERS, AGENTS, AND  
 EMPLOYEES FROM DAMAGES OR COST, INCLUDING REASONABLE  
 ATTORNEY'S FEES, ARISING FROM THE USE OF THESE DRAWINGS.



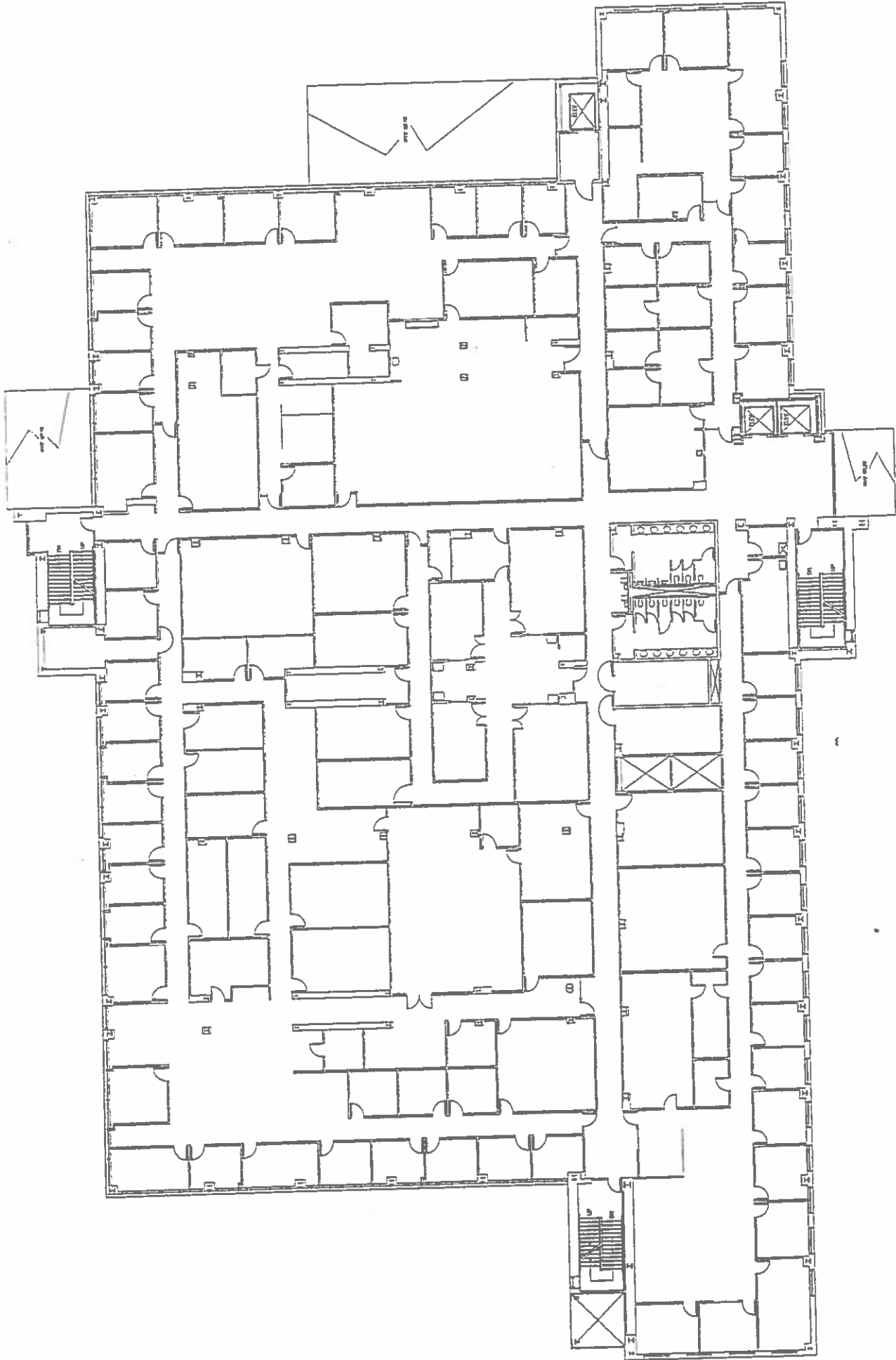
PHARMACY & HEALTH SCIENCES  
 BUILDING #603  
 BASEMENT FLOOR



DISCLAIMER: OREGON STATE UNIVERSITY, FACILITIES PLANNING AND MANAGEMENT HAS THESE DOCUMENTS AVAILABLE ON AN "AS IS" BASIS. THESE DRAWINGS WERE CREATED USING AUTOCAD FROM AUTODESK AND ARE ACCURATE FOR SPACE MANAGEMENT, "FLOOR PLAN" USE. THE USERS WILL HOLD HARMLESS WSU, ITS OFFICERS, AGENTS, AND EMPLOYEES FROM DAMAGES OR COST, INCLUDING REASONABLE ATTORNEY'S FEES, ARISING FROM THE USE OF THESE DRAWINGS.



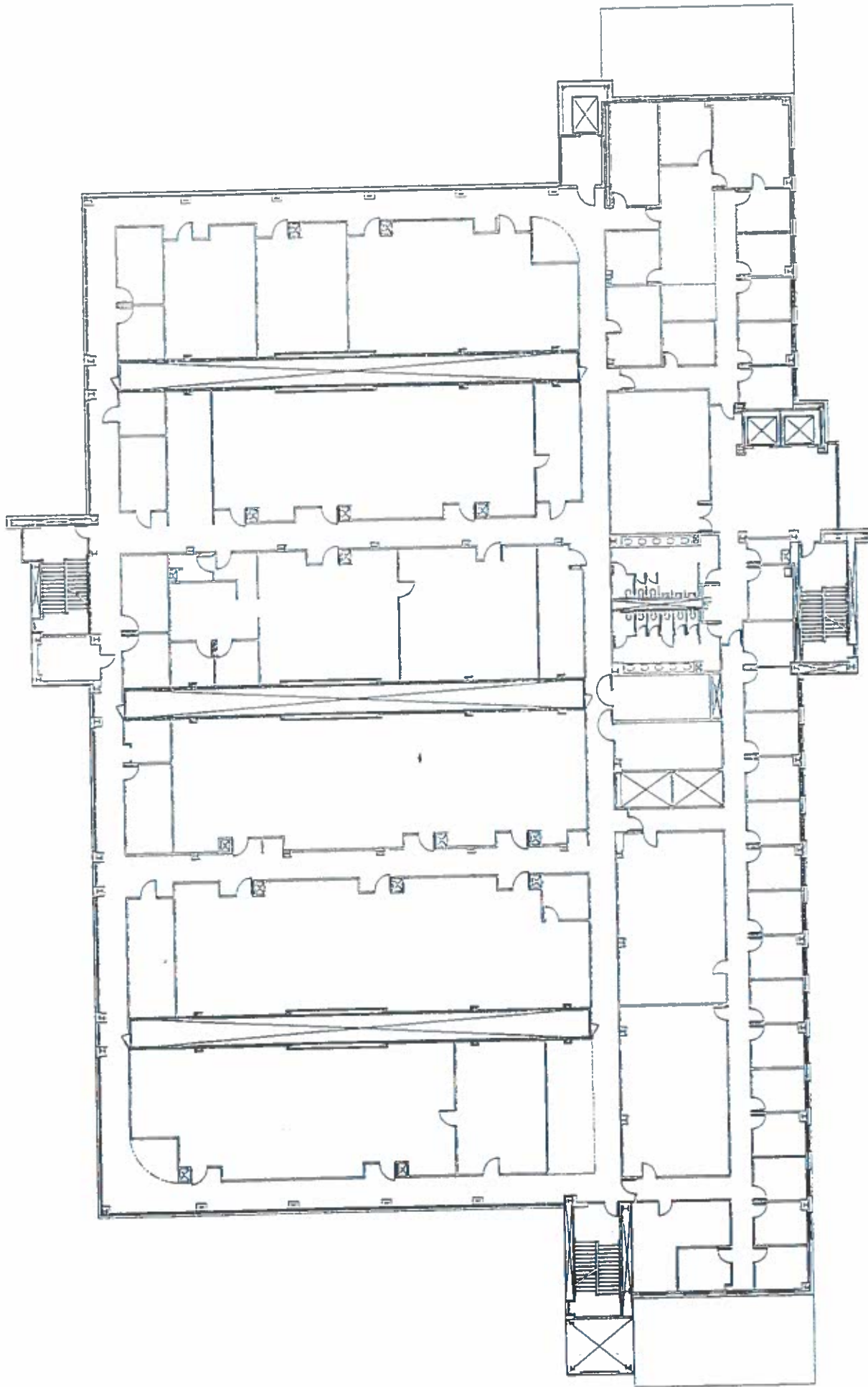
PHARMACY & HEALTH SCIENCES  
 BUILDING 11603  
 FIRST FLOOR



DISCLAIMER: WAYNE STATE UNIVERSITY, FACILITIES PLANNING AND MANAGEMENT MAKES THESE DOCUMENTS AVAILABLE ON AN "AS IS" BASIS. THESE DRAWINGS WERE CREATED USING AUTOCAD FROM AUTODESK AND ARE ACCURATE FOR SPACE MANAGEMENT, FLOOR PLAN USE. THE USERS WILL HOLD HARMLESS WSU, ITS OFFICERS, AGENTS, AND EMPLOYEES FROM DAMAGES OR COST, INCLUDING REASONABLE ATTORNEY'S FEES, ARISING FROM THE USE OF THESE DRAWINGS.



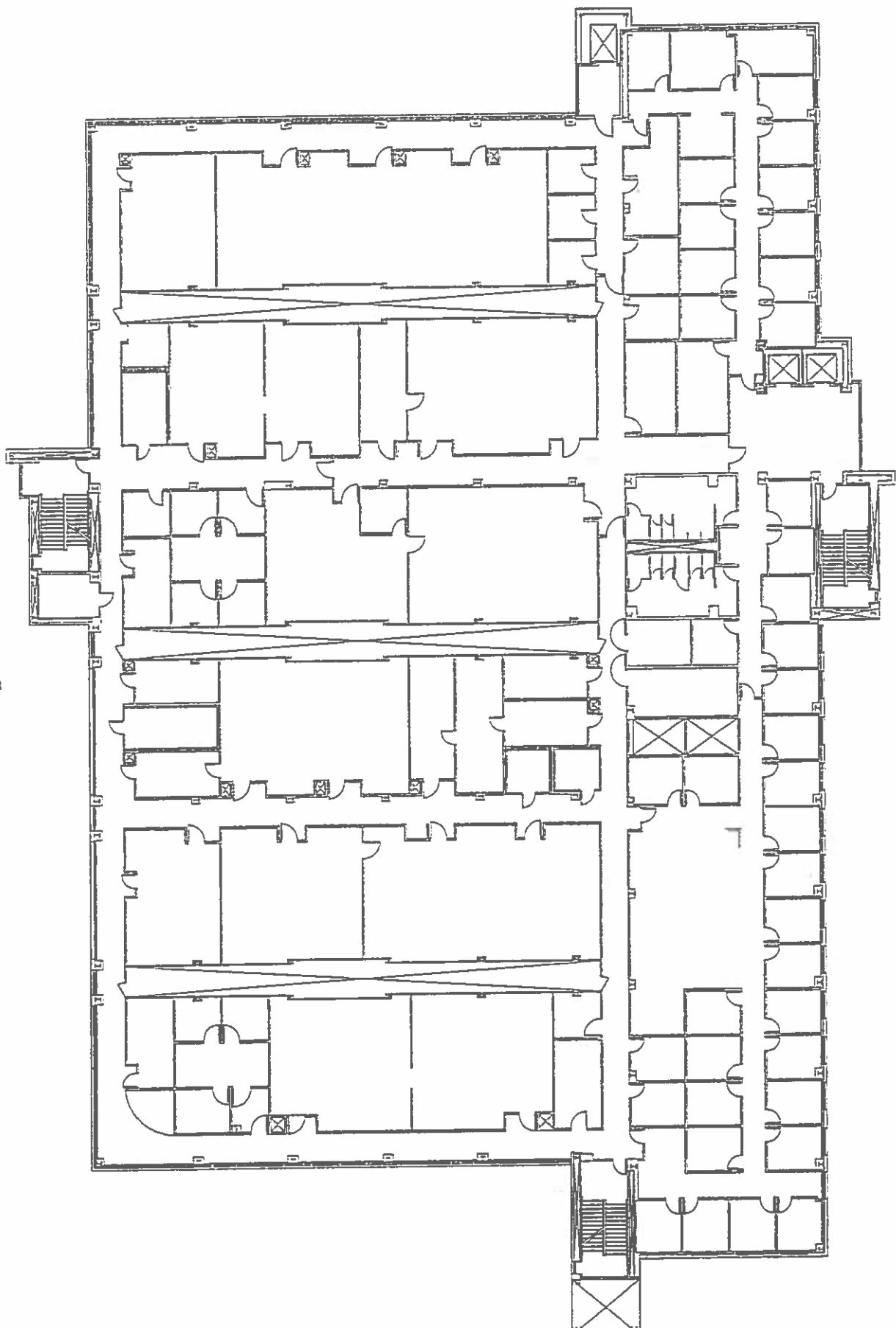
PHARMACY & HEALTH SCIENCES  
 BUILDING #603  
 SECOND FLOOR



DISCLAIMER: WYOMING STATE UNIVERSITY FACILITIES PLANNING AND MANAGEMENT WANTS THESE DOCUMENTS AVAILABLE ON AN "AS IS" BASIS. THESE DRAWINGS WERE CREATED USING AUTOCAD FROM AUTODESK AND ARE ACCURATE FOR SPACE MANAGEMENT, FLOOR PLAN USE. THE USERS WILL HOLD HARMLESS WSM, ITS OFFICERS, AGENTS, AND EMPLOYEES FROM DAMAGES OR COST, INCLUDING REASONABLE ATTORNEY'S FEES, ARISING FROM THE USE OF THESE DRAWINGS.



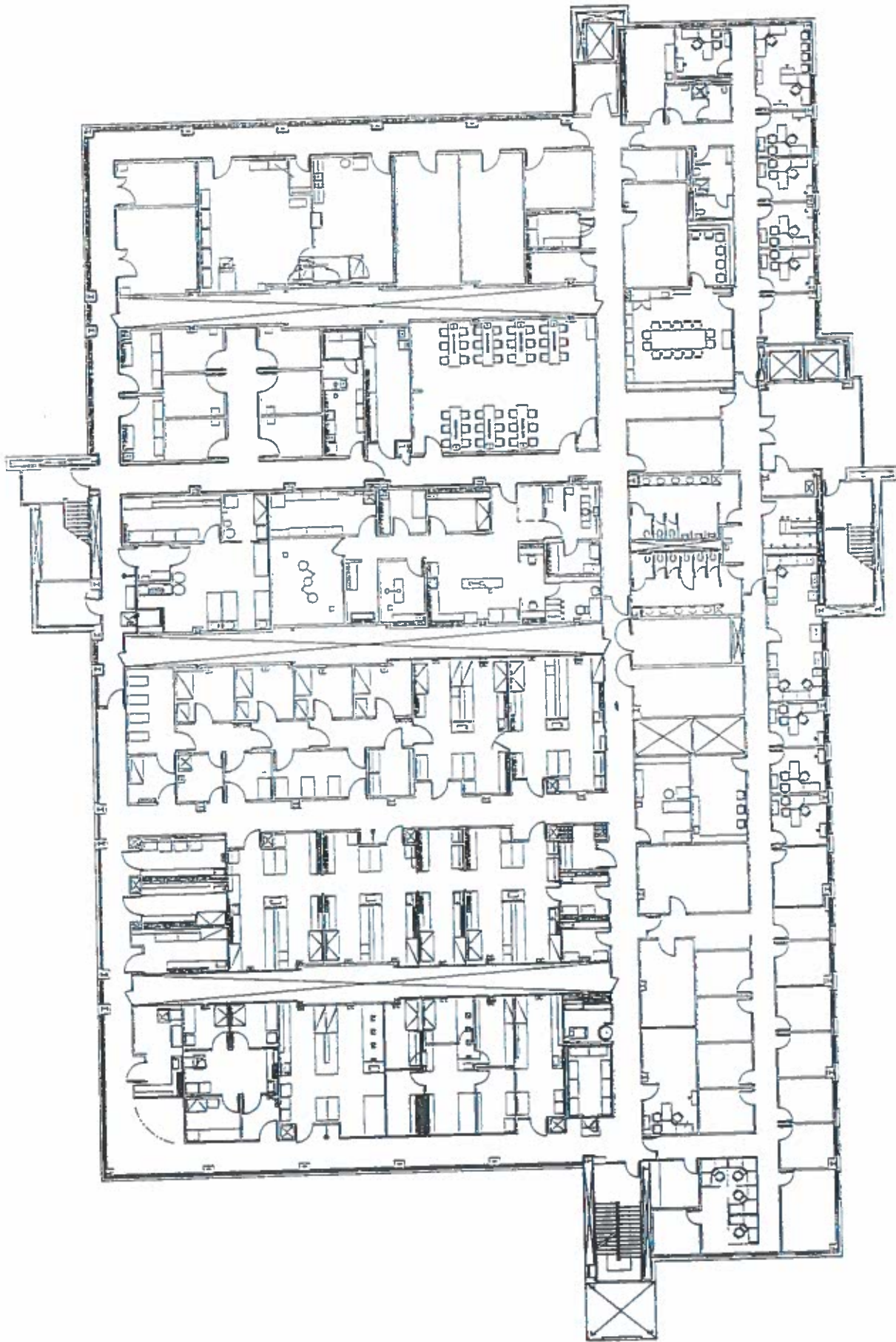
PHARMACY & HEALTH SCIENCES  
 BUILDING #603  
 THIRD FLOOR



DISCLAIMER:  
WAYNE STATE UNIVERSITY, FACILITIES PLANNING AND MANAGEMENT  
MAKES THESE DOCUMENTS AVAILABLE ON AN "AS IS" BASIS.  
THESE DRAWINGS WERE CREATED USING AUTOCAD FROM AUTODESK AND  
ARE ACCURATE FOR SPACE MANAGEMENT, 'FLOOR PLAN' USE. THE  
USERS WILL HOLD HARMLESS WSO, ITS OFFICERS, AGENTS, AND  
EMPLOYEES FROM DAMAGES OR COST, INCLUDING REASONABLE  
ATTORNEY'S FEES, ARISING FROM THE USE OF THESE DRAWINGS.



PHARMACY & HEALTH SCIENCES  
BUILDING #603  
FOURTH FLOOR



DISCLAIMER:  
WAYNE STATE UNIVERSITY, FACILITIES PLANNING AND MANAGEMENT  
MAKES THESE DOCUMENTS AVAILABLE ON AN "AS IS" BASIS.  
THESE DRAWINGS WERE CREATED USING AUTOCAD FROM AUTODESK AND  
ARE ACCURATE FOR SPACE MANAGEMENT, FLOOR PLAN USE. THE  
USERS WILL HOLD HARMLESS WSU, ITS OFFICERS, AGENTS, AND  
EMPLOYEES FROM DAMAGES OR COST, INCLUDING REASONABLE  
ATTORNEY'S FEES, ARISING FROM THE USE OF THESE DRAWINGS.



PHARMACY & HEALTH SCIENCES  
BUILDING #603  
FIFTH FLOOR