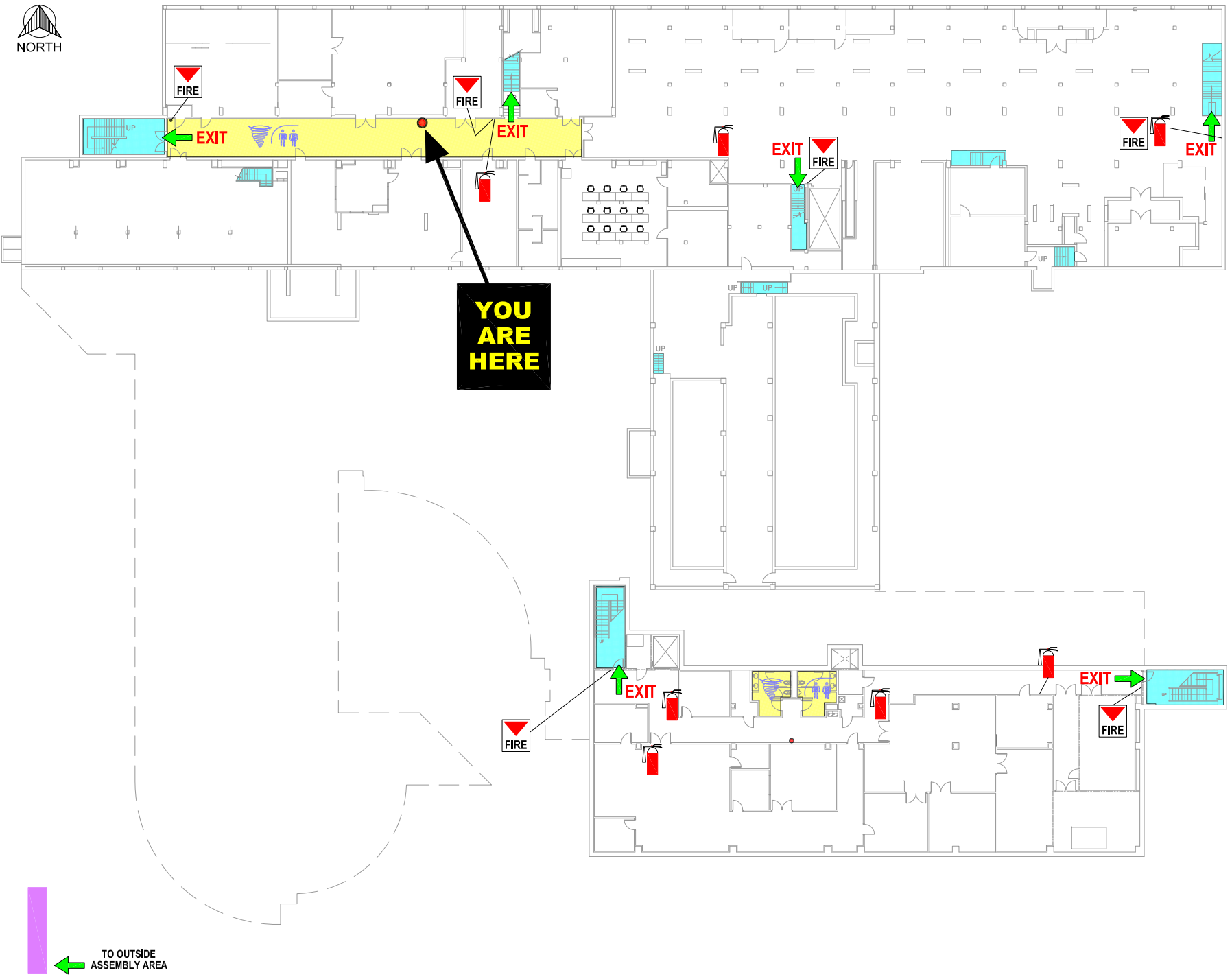


ENGINEERING BUILDING

BASEMENT FLOOR EVACUATION PLAN



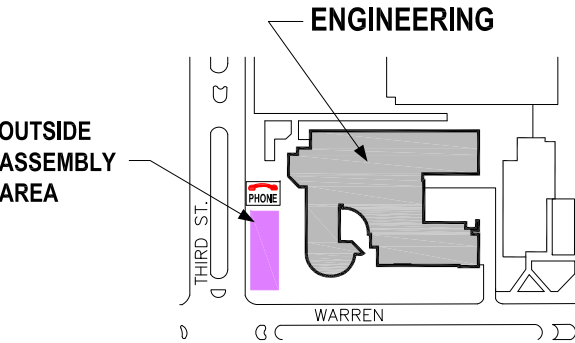
WAYNE STATE UNIVERSITY
POLICE DEPARTMENT
EMERGENCY PHONE NUMBER
313-577-2222

KEY

- TO STAIRWELL **EXIT**, THEN EXIT AT FIRST FLOOR
- TORNADO SHELTER AREA
- STAIRWELL - AREA OF REFUGE
- OUTSIDE ASSEMBLY AREA
- REST ROOMS
- FIRE ALARM PULL BOX
- FIRE EXTINGUISHER
- EMERGENCY PHONE - WSU CAMPUS BLUE LIGHT

EMERGENCY GUIDELINES

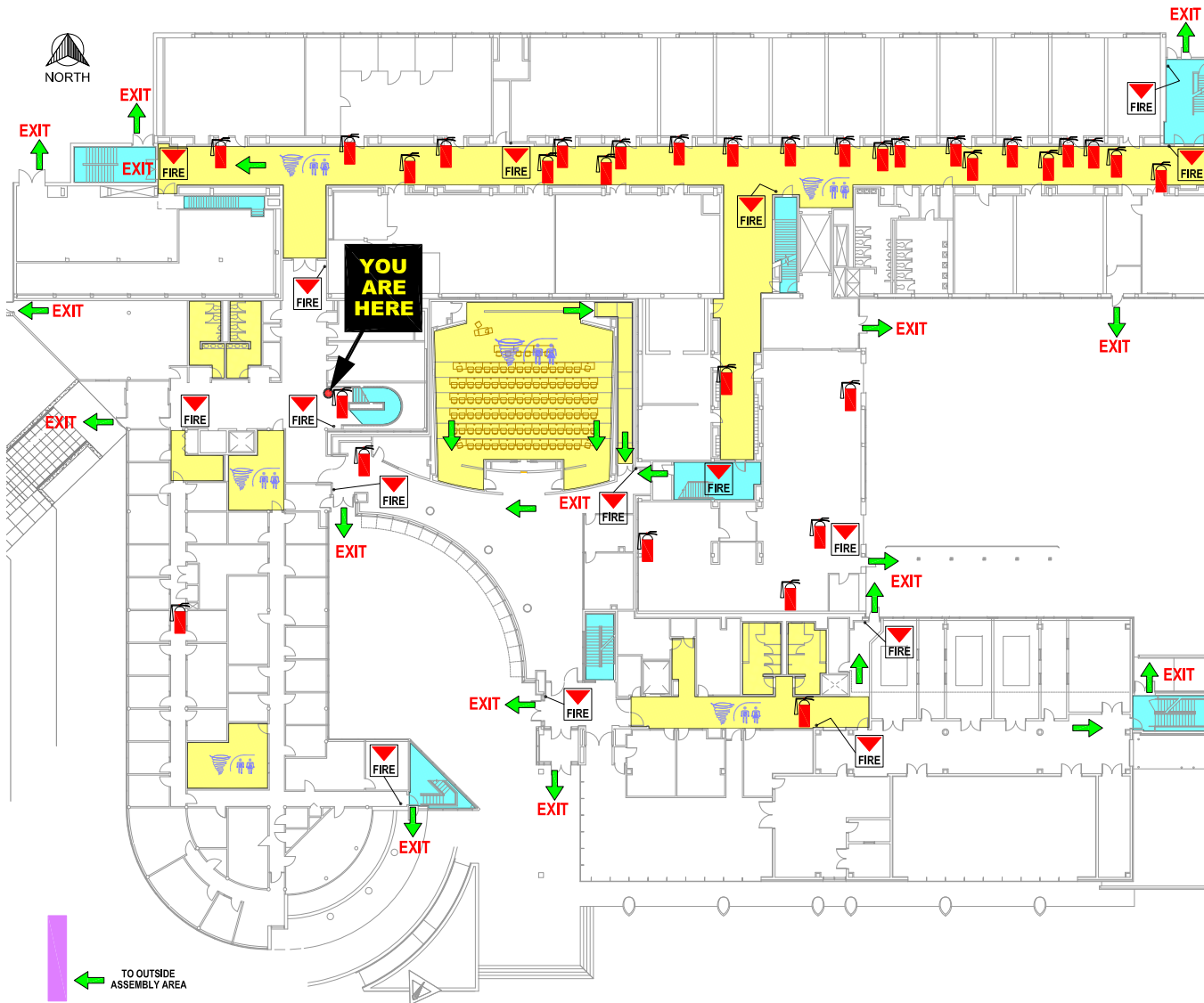
- A. FAMILIARIZE YOURSELF WITH ALL **EXIT** LOCATIONS.
- B. EVACUATE THE BUILDING WHEN THE FIRE ALARM IS ACTIVATED AND PROCEED TO **OUTSIDE ASSEMBLY AREA**.
- C. IN CASE OF FIRE, **DO NOT** USE THE ELEVATORS
- D. IN THE EVENT OF SEVERE WEATHER WARNING, PROCEED TO A DESIGNATED **TORNADO SHELTER AREA**, OR TO NEAREST **RESTROOM** AS NECESSARY OR INSTRUCTED TO DO SO BY MANAGEMENT.



ENGINEERING BUILDING

FIRST FLOOR EVACUATION PLAN

WAYNE STATE UNIVERSITY
POLICE DEPARTMENT
EMERGENCY PHONE NUMBER
313-577-2222

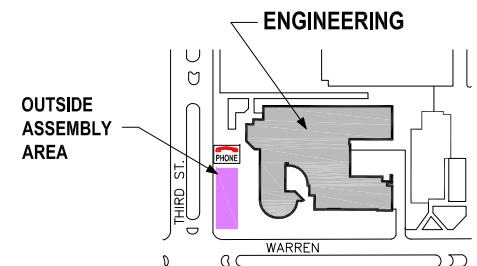


KEY

- TO STAIRWELL **EXIT**, THEN EXIT AT FIRST FLOOR
- TORNADO SHELTER AREA
- STAIRWELL - AREA OF REFUGE
- OUTSIDE ASSEMBLY AREA
- REST ROOMS
- FIRE ALARM PULL BOX
- FIRE EXTINGUISHER
- EMERGENCY PHONE - WSU CAMPUS BLUE LIGHT

EMERGENCY GUIDELINES

- A. FAMILIARIZE YOURSELF WITH ALL **EXIT** LOCATIONS.
- B. EVACUATE THE BUILDING WHEN THE FIRE ALARM IS ACTIVATED AND PROCEED TO **OUTSIDE ASSEMBLY AREA**.
- C. IN CASE OF FIRE, **DO NOT** USE THE ELEVATORS
- D. IN THE EVENT OF SEVERE WEATHER WARNING, PROCEED TO A DESIGNATED **TORNADO SHELTER AREA**, OR TO NEAREST **RESTROOM** AS NECESSARY OR INSTRUCTED TO DO SO BY MANAGEMENT.



LOCATION MAP

Bldg # 090

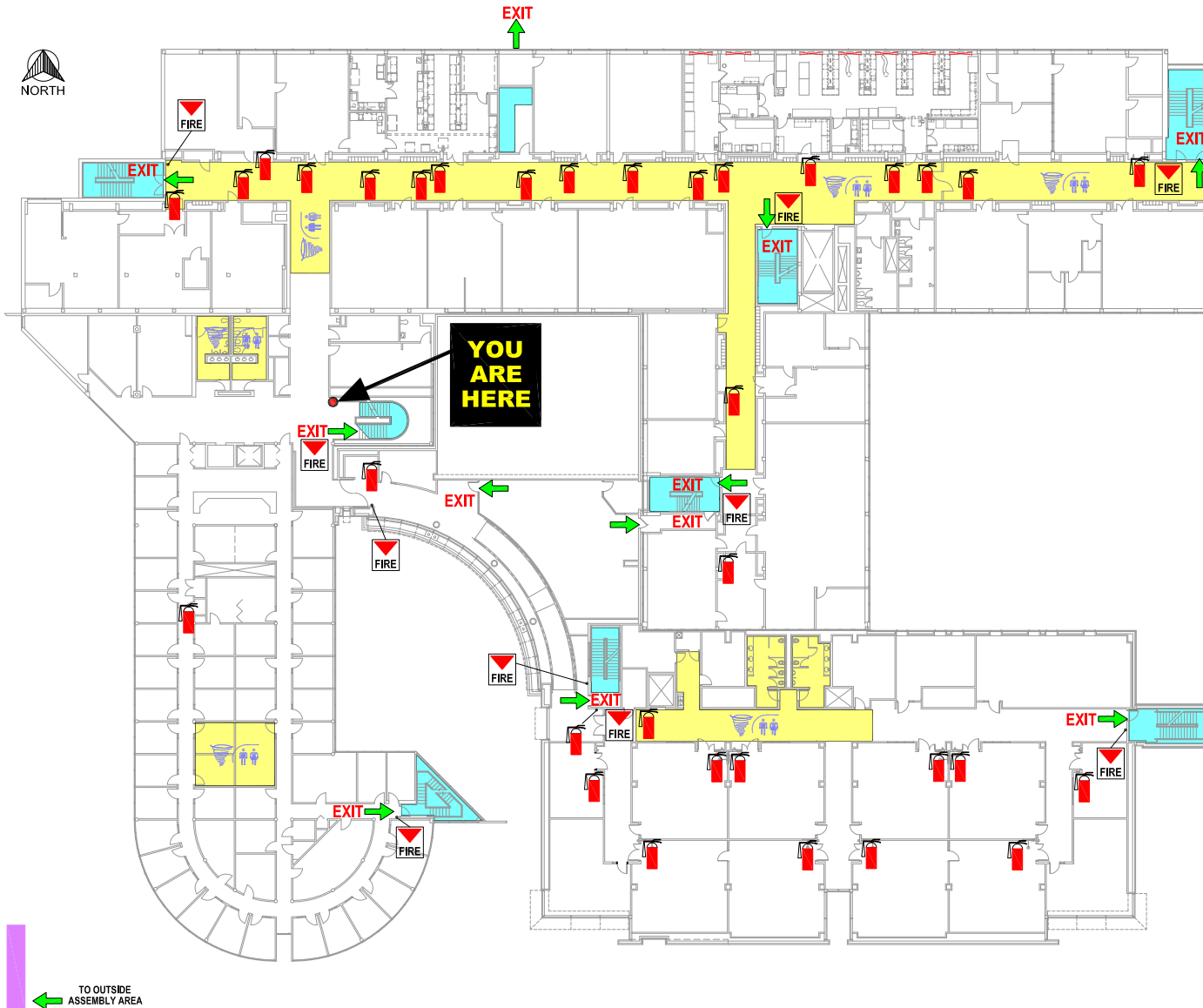
AUG 2014

3

ENGINEERING BUILDING

SECOND FLOOR EVACUATION PLAN

WAYNE STATE UNIVERSITY
POLICE DEPARTMENT
EMERGENCY PHONE NUMBER
313-577-2222

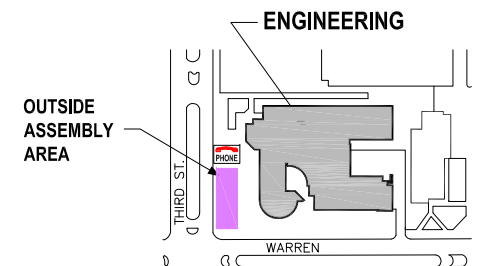


KEY

- TO STAIRWELL **EXIT**, THEN EXIT AT FIRST FLOOR
- TORNADO SHELTER AREA
- STAIRWELL - AREA OF REFUGE
- OUTSIDE ASSEMBLY AREA
- REST ROOMS
- FIRE ALARM PULL BOX
- FIRE EXTINGUISHER
- EMERGENCY PHONE - WSU CAMPUS BLUE LIGHT

EMERGENCY GUIDELINES

- A. FAMILIARIZE YOURSELF WITH ALL **EXIT** LOCATIONS.
- B. EVACUATE THE BUILDING WHEN THE FIRE ALARM IS ACTIVATED AND PROCEED TO **OUTSIDE ASSEMBLY AREA**.
- C. IN CASE OF FIRE, **DO NOT** USE THE ELEVATORS
- D. IN THE EVENT OF SEVERE WEATHER WARNING, PROCEED TO A DESIGNATED **TORNADO SHELTER AREA**, OR TO NEAREST **RESTROOM** AS NECESSARY OR INSTRUCTED TO DO SO BY MANAGEMENT.



LOCATION MAP

Bldg # 090

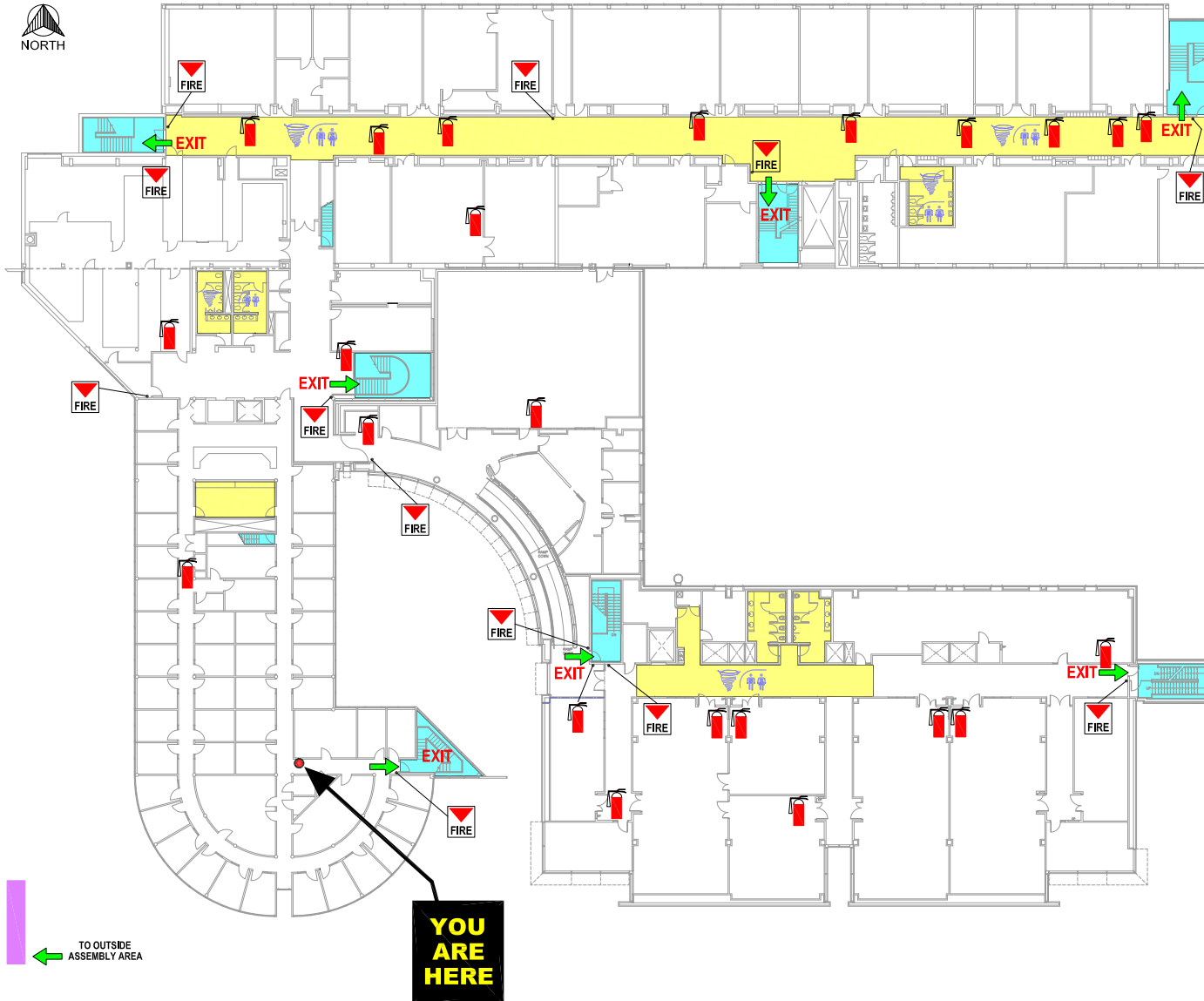
AUG 2014

3

ENGINEERING BUILDING

THIRD FLOOR EVACUATION PLAN

WAYNE STATE UNIVERSITY
POLICE DEPARTMENT
EMERGENCY PHONE NUMBER
313-577-2222

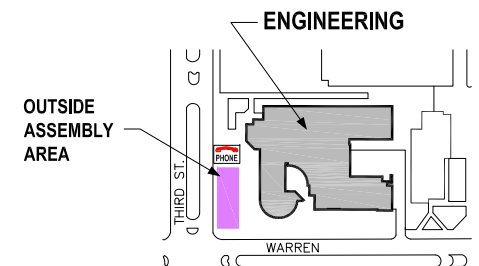


KEY

- TO STAIRWELL **EXIT**, THEN EXIT AT FIRST FLOOR
- TORNADO SHELTER AREA
- STAIRWELL - AREA OF REFUGE
- OUTSIDE ASSEMBLY AREA
- REST ROOMS
- FIRE ALARM PULL BOX
- FIRE EXTINGUISHER
- EMERGENCY PHONE - WSU CAMPUS BLUE LIGHT

EMERGENCY GUIDELINES

- A. FAMILIARIZE YOURSELF WITH ALL **EXIT** LOCATIONS.
- B. EVACUATE THE BUILDING WHEN THE FIRE ALARM IS ACTIVATED AND PROCEED TO **OUTSIDE ASSEMBLY AREA**.
- C. IN CASE OF FIRE, **DO NOT** USE THE ELEVATORS
- D. IN THE EVENT OF SEVERE WEATHER WARNING, PROCEED TO A DESIGNATED **TORNADO SHELTER AREA**, OR TO NEAREST **RESTROOM** AS NECESSARY OR INSTRUCTED TO DO SO BY MANAGEMENT.



LOCATION MAP

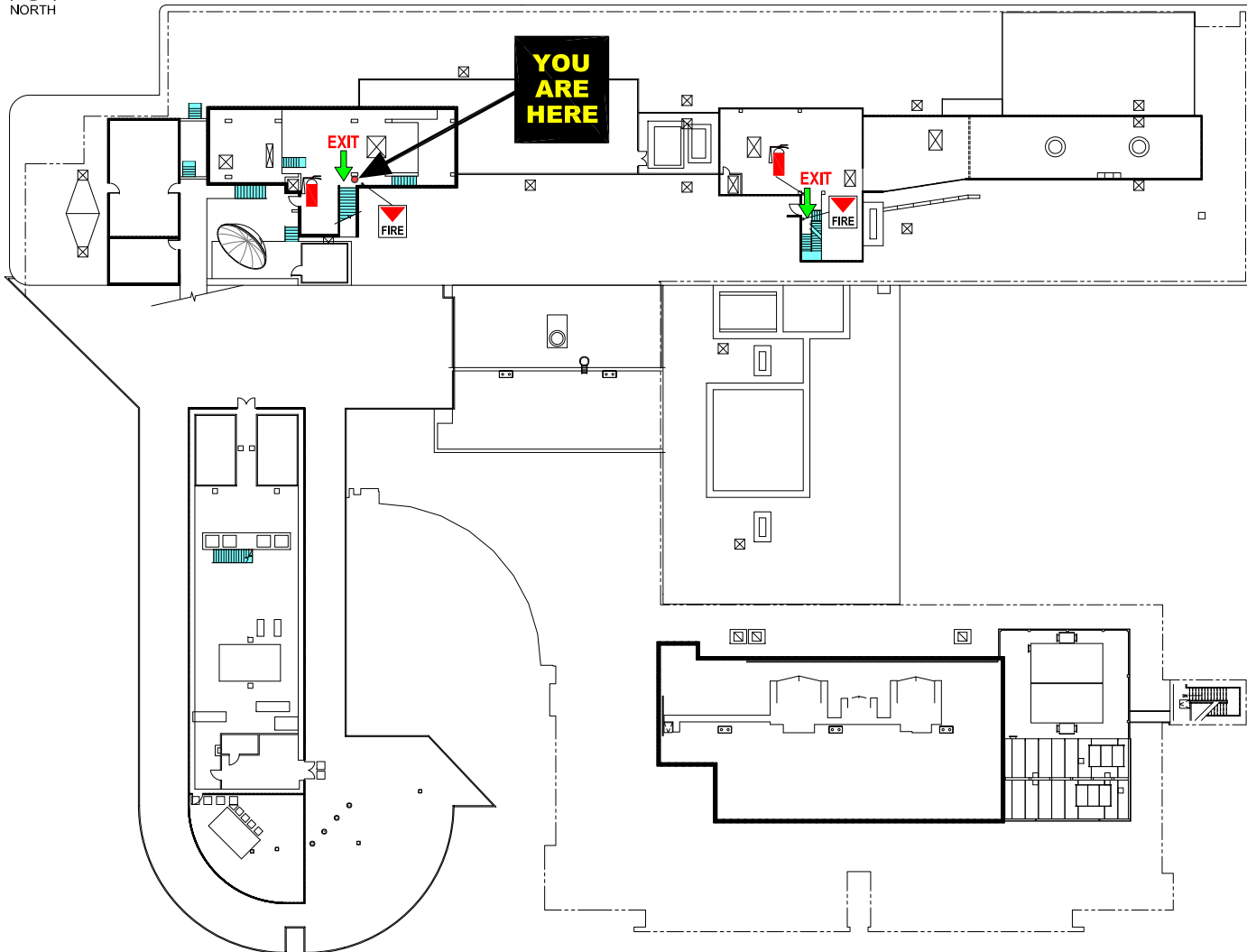
Bldg # 090

AUG 2014





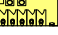



ENGINEERING BUILDING

PENTHOUSE FLOOR EVACUATION PLAN


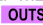

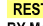
WAYNE STATE UNIVERSITY
POLICE DEPARTMENT
EMERGENCY PHONE NUMBER
313-577-2222

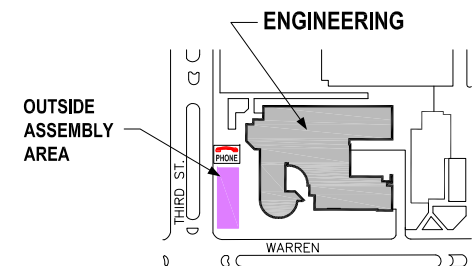


KEY

-  TO STAIRWELL **EXIT**, THEN EXIT AT FIRST FLOOR
-  TORNADO SHELTER AREA
-  STAIRWELL - AREA OF REFUGE
-  OUTSIDE ASSEMBLY AREA
-  REST ROOMS
-  FIRE ALARM PULL BOX
-  FIRE EXTINGUISHER
-  EMERGENCY PHONE - WSU CAMPUS BLUE LIGHT

EMERGENCY GUIDELINES

- A. FAMILIARIZE YOURSELF WITH ALL  **EXIT** LOCATIONS.
- B. EVACUATE THE BUILDING WHEN THE FIRE ALARM IS ACTIVATED AND PROCEED TO  **OUTSIDE ASSEMBLY AREA**.
- C. IN CASE OF FIRE, **DO NOT** USE THE ELEVATORS
- D. IN THE EVENT OF SEVERE WEATHER WARNING, PROCEED TO A DESIGNATED  **TORNADO SHELTER AREA**, OR TO NEAREST  **RESTROOM** AS NECESSARY OR INSTRUCTED TO DO SO BY MANAGEMENT.



LOCATION MAP

Bldg # 090

AUG 2014