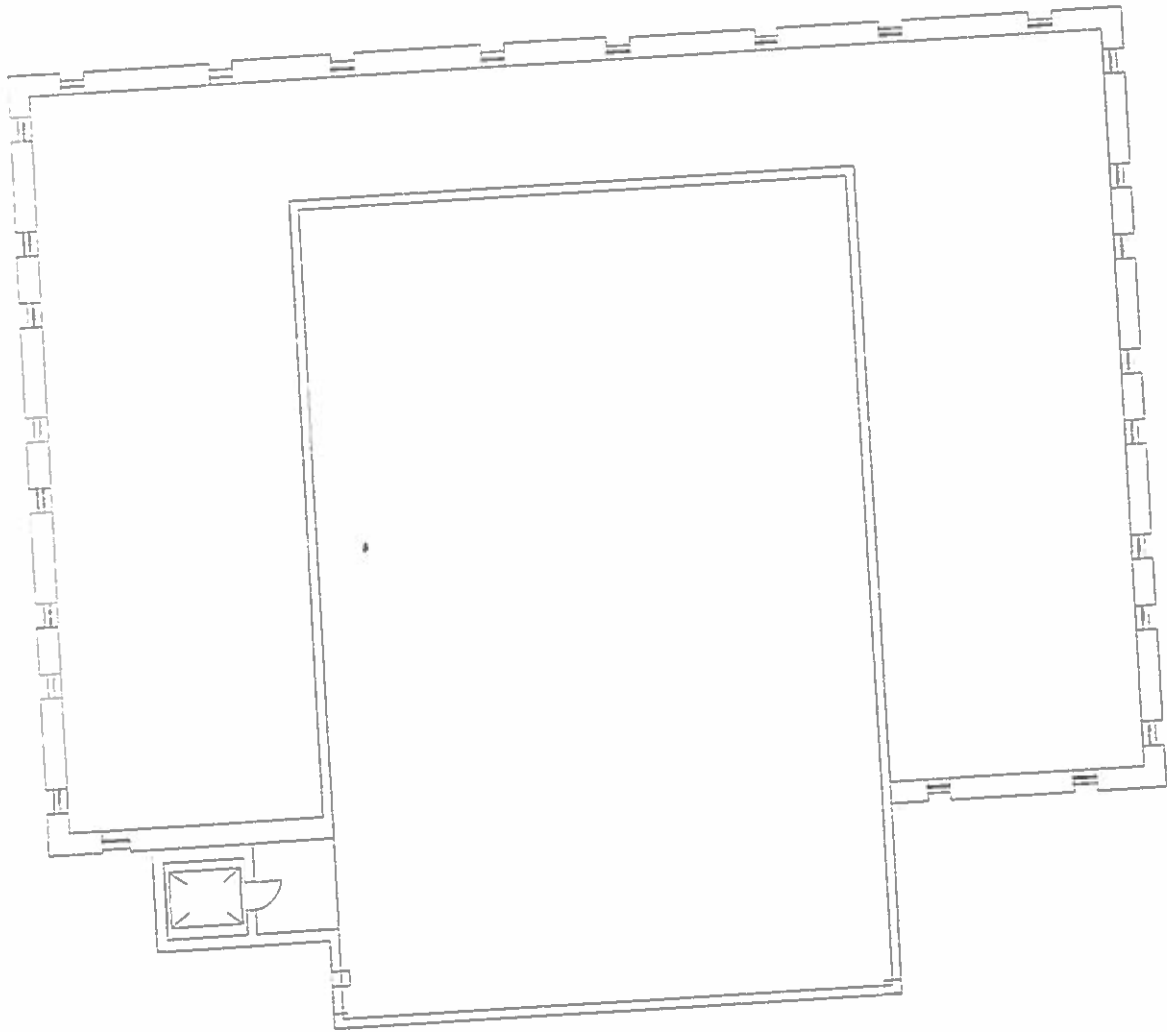


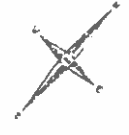
DISCLAIMER: UNIVERSITY, FACILITIES PLANNING AND MANAGEMENT
WANTIE STATE DOCUMENTS AVAILABLE ON AN "AS IS" BASIS.
THESE DRAWINGS WERE CREATED USING AUTOCAD FROM AN AUTODESK
DRAWING AND ARE NOT TO BE USED FOR CONSTRUCTION. ANY
AND ARE ACCURATE TO THE BEST OF OUR KNOWLEDGE AND BELIEF.
USERS WILL HOLD THE UNIVERSITY, WSU, ITS OFFICERS, AGENTS,
EMPLOYEES FROM DAMAGES OR COST, INCLUDING REASONABLE
ATTORNEY'S FEES, ARISING FROM THE USE OF THESE DRAWINGS.



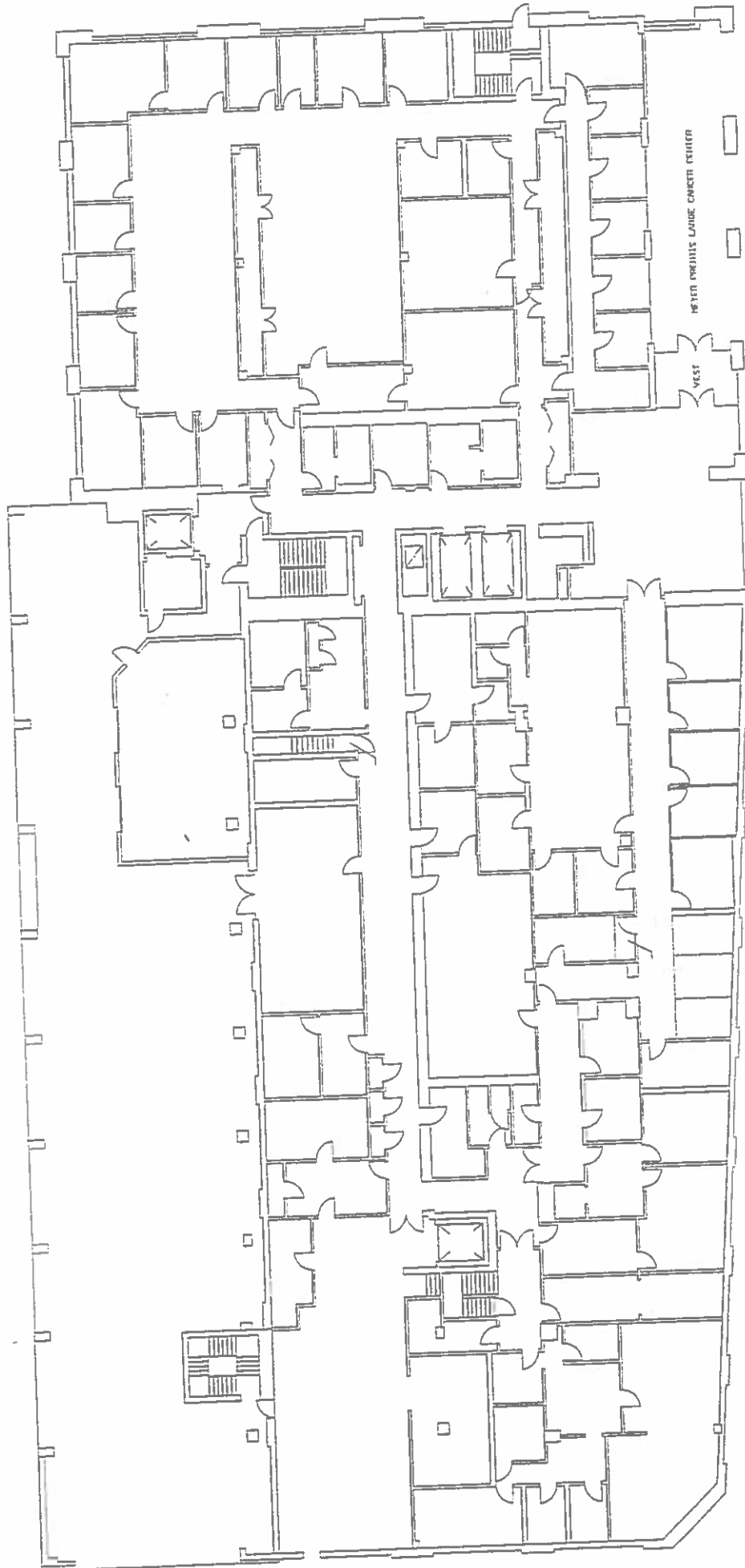
110 WARREN EAST
BUILDING #637
BASEMENT FLOOR



DISCLAIMER: UNIVERSITY, FACILITIES PLANNING AND MANAGEMENT
WARREN STATE UNIVERSITY, FACILITIES PLANNING AND MANAGEMENT
MAKES THESE DOCUMENTS AVAILABLE ON AN "AS IS" BASIS.
THESE DRAWINGS WERE CREATED USING AUTOCAD FROM AUTODESK
AND ARE ACCURATE FOR SPACE MANAGEMENT, FLOOR PLAN, USE, THE
EMPLOYERS WILL HOLD HARMLESS WSU, ITS OFFICERS, AGENTS, AND
EMPLOYEES FROM DAMAGES OR COST, INCLUDING REASONABLE
ATTORNEY'S FEES, ARISING FROM THE USE OF THESE DRAWINGS.



110 WARREN EAST
BUILDING #637
MEZZANINE FLOOR



DISCLAIMER: WAYNE STATE UNIVERSITY, FACILITIES PLANNING AND MANAGEMENT MAKES THESE DOCUMENTS AVAILABLE ON AN "AS IS" BASIS. THESE DRAWINGS WERE CREATED USING AUTOCAD FROM A CAD MODEL AND ARE ACCURATE FOR SPACE MANAGEMENT, FLOORING, AND CEILING. USERS WILL HOLD INMATES WSU, ITS OFFICERS, AGENTS, EMPLOYEES FROM DAMAGES OR COST, INCLUDING REASONABLE ATTORNEY'S FEES, ARISING FROM THE USE OF THESE DRAWINGS.



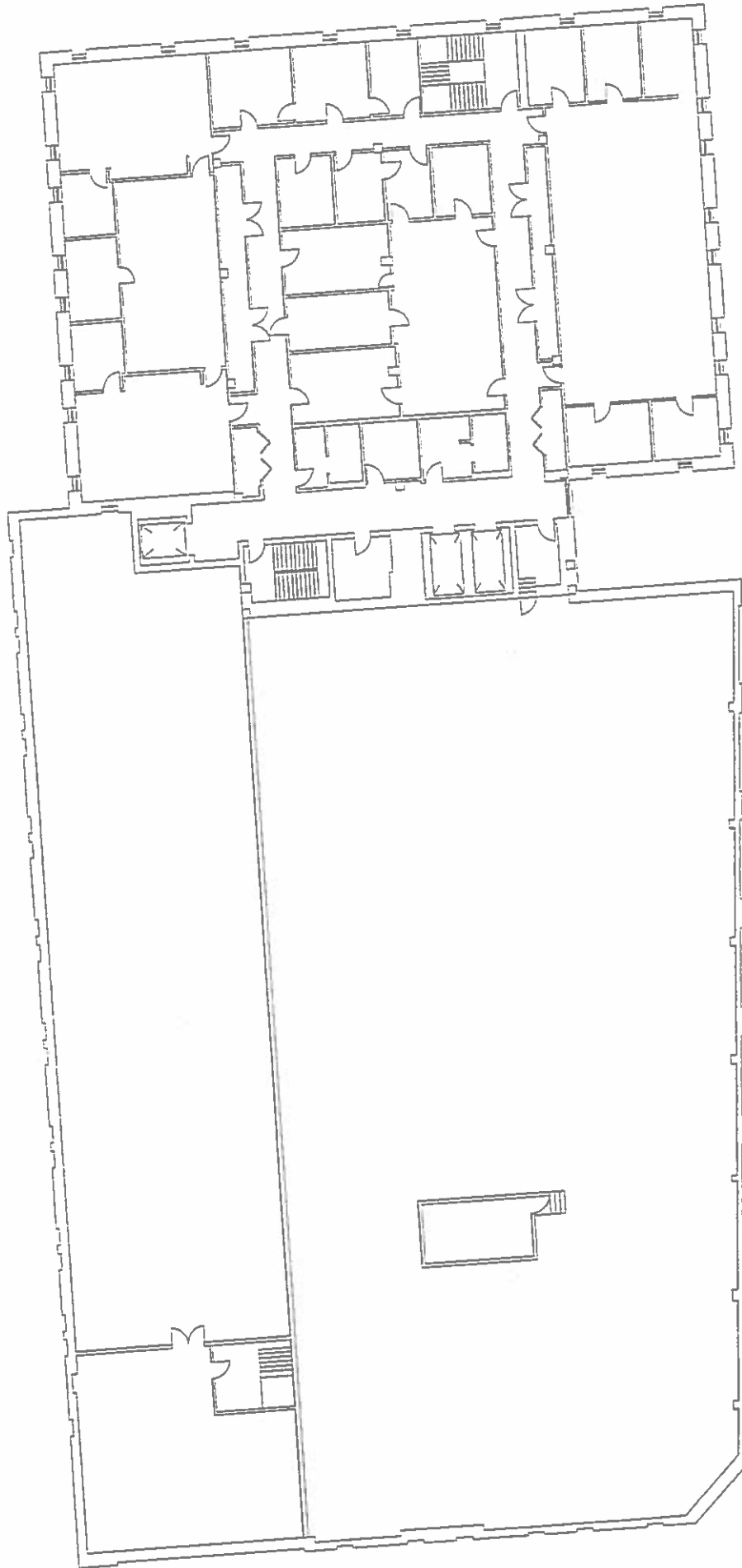
110 WARREN EAST
 BUILDING #637
 FIRST FLOOR



DISCLAIMER: UNIFORMITY, FACILITIES PLANNING AND MANAGEMENT
WATHE THESE DOCUMENTS AVAILABLE ON AN "AS IS" BASIS.
THESE DRAWINGS WERE CREATED USING AUTOCAD FROM AUTODESK
AND ARE ACCURATE FOR SPACE MANAGEMENT PURPOSES, AND
DO NOT HOLD LIABILITY FOR ANY DAMAGES, INJURIES, AND
ATTORNEY'S FEES, ARISING FROM THE USE OF THESE DRAWINGS.



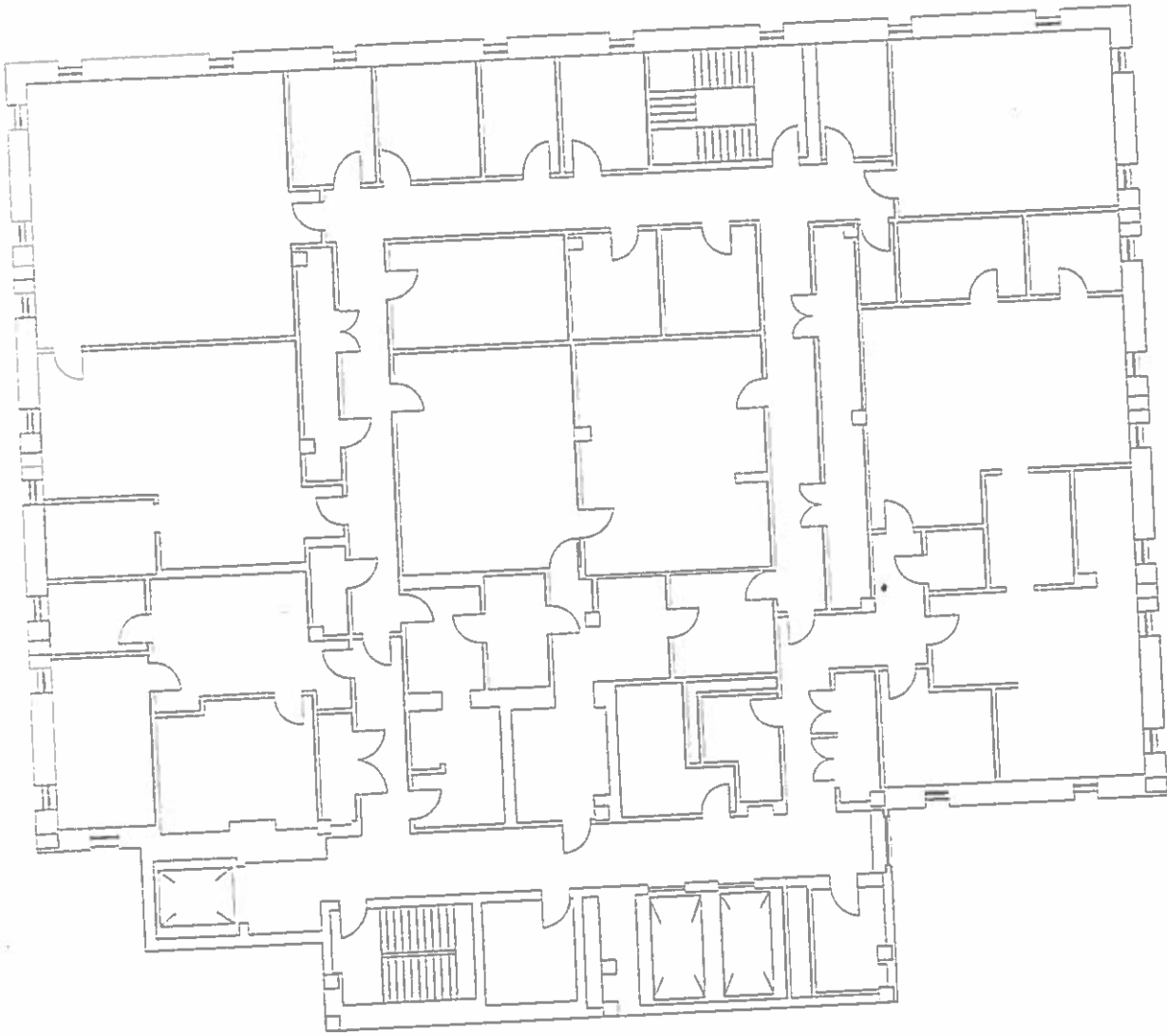
110 WARREN EAST
BUILDING #637
SECOND FLOOR



DISCLAIMER: ACCURACY, FACILITIES PLANNING AND MANAGEMENT
WARRE STATE UNIVERSITY, AVAILABLE ON A "AS IS" BASIS.
MAKES THESE DOCUMENTS AVAILABLE ON A "AS IS" BASIS.
THESE DRAWINGS WERE CREATED USING AUTOCAD FROM A PLAN. THE
AND ARE ACCURATE FOR SPACE MANAGEMENT, FLOODING, AND
EMPLOYEES WILL SUFFER FROM DAMAGES OR COST, INCLUDING REASONABLE
EMPLOYEES' FEES, ARISING FROM THE USE OF THESE DRAWINGS.



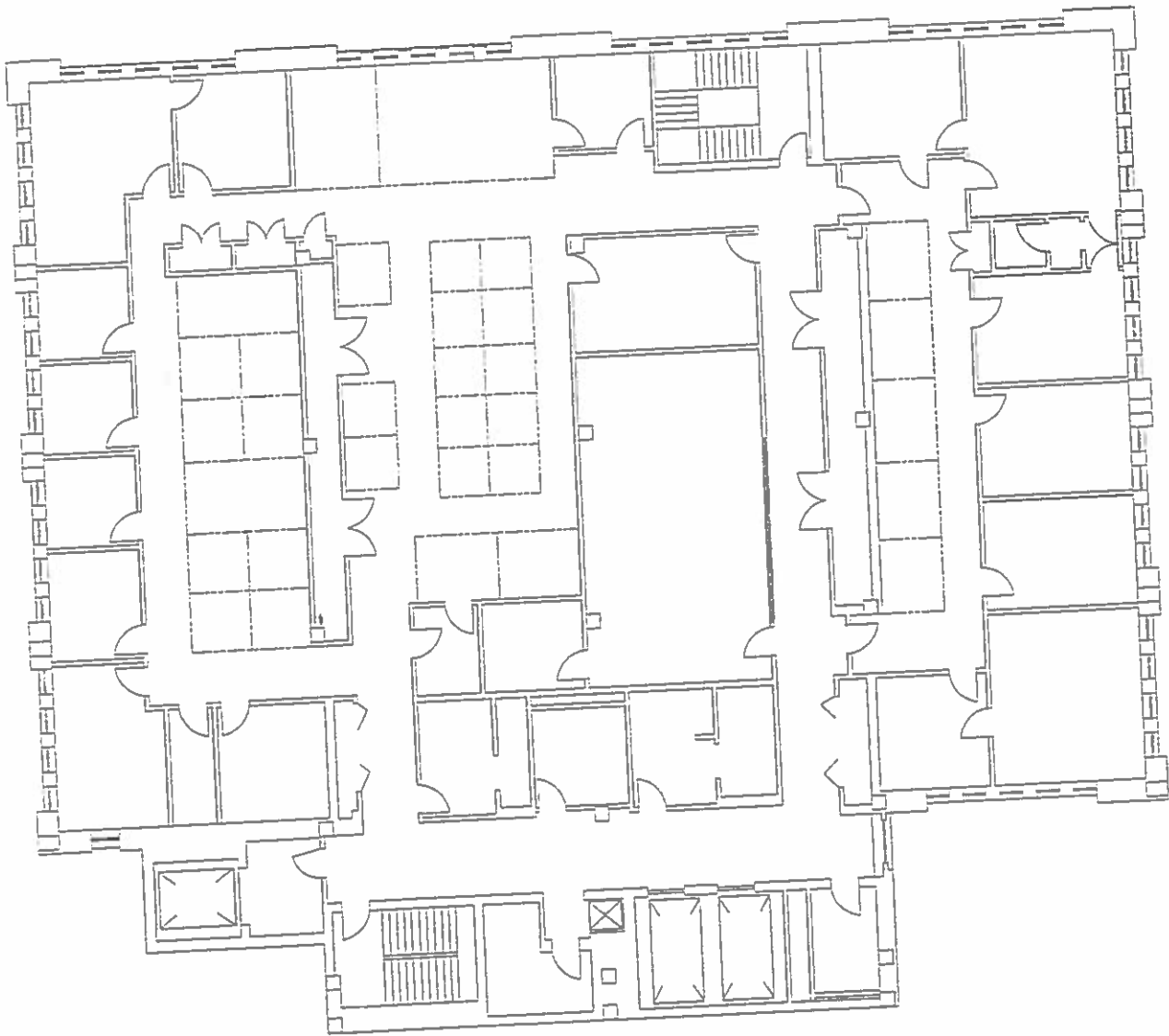
110 WARREN EAST
BUILDING #637
THIRD FLOOR



DISCLAIMER: UNIVERSITY, FACILITIES PLANNING AND MANAGEMENT
WAYNE STATE UNIVERSITY, FACILITIES PLANNING AND MANAGEMENT
MAKES THESE DOCUMENTS AVAILABLE ON AN "AS IS" BASIS.
THESE DRAWINGS WERE CREATED USING AUTOCAD FROM
AUTODESK AND ARE ACCURATE FOR SPACE MANAGEMENT, FLOOR
PLAN USE. THE USERS WILL HOLD HARMLESS WSD, ITS
OFFICERS, AGENTS, AND EMPLOYEES FROM DAMAGES OR COST,
INCLUDING REASONABLE ATTORNEY'S FEES, ARISING FROM THE
USE OF THESE DRAWINGS.



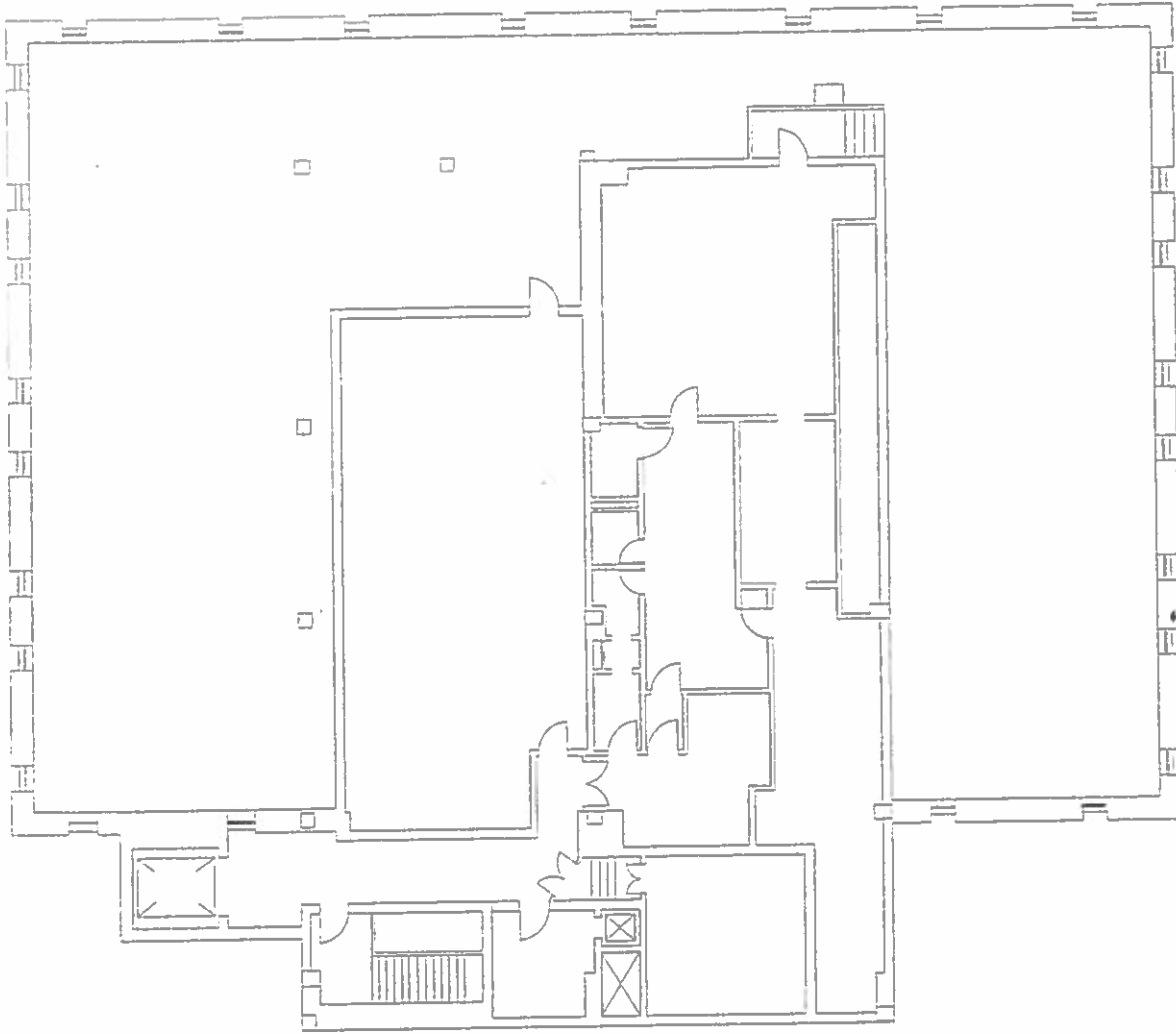
110 WARREN EAST
BUILDING #637
FOURTH FLOOR



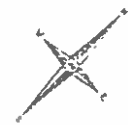
DISCLAIMER: WAYNE STATE UNIVERSITY, FACILITIES PLANNING AND MANAGEMENT MAKES THESE DRAWINGS AVAILABLE ON AN "AS IS" BASIS. THESE DRAWINGS WERE CREATED USING AUTOCAD FROM AN OUTDOOR THESE DRAWINGS ARE FOR SPACE MANAGEMENT, FLOOR PLAN USE, AND ARE NOT TO BE USED FOR CONSTRUCTION. WAYNE STATE UNIVERSITY AND ITS OFFICERS, EMPLOYEES, AGENTS, ATTORNEYS, AND EMPLOYEES WILL HOLD LIABILITY FOR ANY DAMAGES OR COSTS, INCLUDING REASONABLE ATTORNEY'S FEES, ARISING FROM THE USE OF THESE DRAWINGS.



110 WARREN EAST
BUILDING #637
FIFTH FLOOR



DISCLAIMER: WAYNE STATE UNIVERSITY, FACILITIES PLANNING AND MANAGEMENT MAKES THESE DOCUMENTS AVAILABLE ON AN "AS IS" BASIS. THESE DRAWINGS WERE CREATED USING AUTOCAD FROM AUTODESK AND ARE ACCURATE FOR SPACE MANAGEMENT, "FLOOR PLAN" USE. THE USERS WILL HOLD WAYNE STATE UNIVERSITY, ITS OFFICERS, AGENTS, AND EMPLOYEES FROM DAMAGES OR COST, INCLUDING REASONABLE ATTORNEY'S FEES, ARISING FROM THE USE OF THESE DRAWINGS.



110 WARREN EAST
BUILDING #637
SIXTH FLOOR