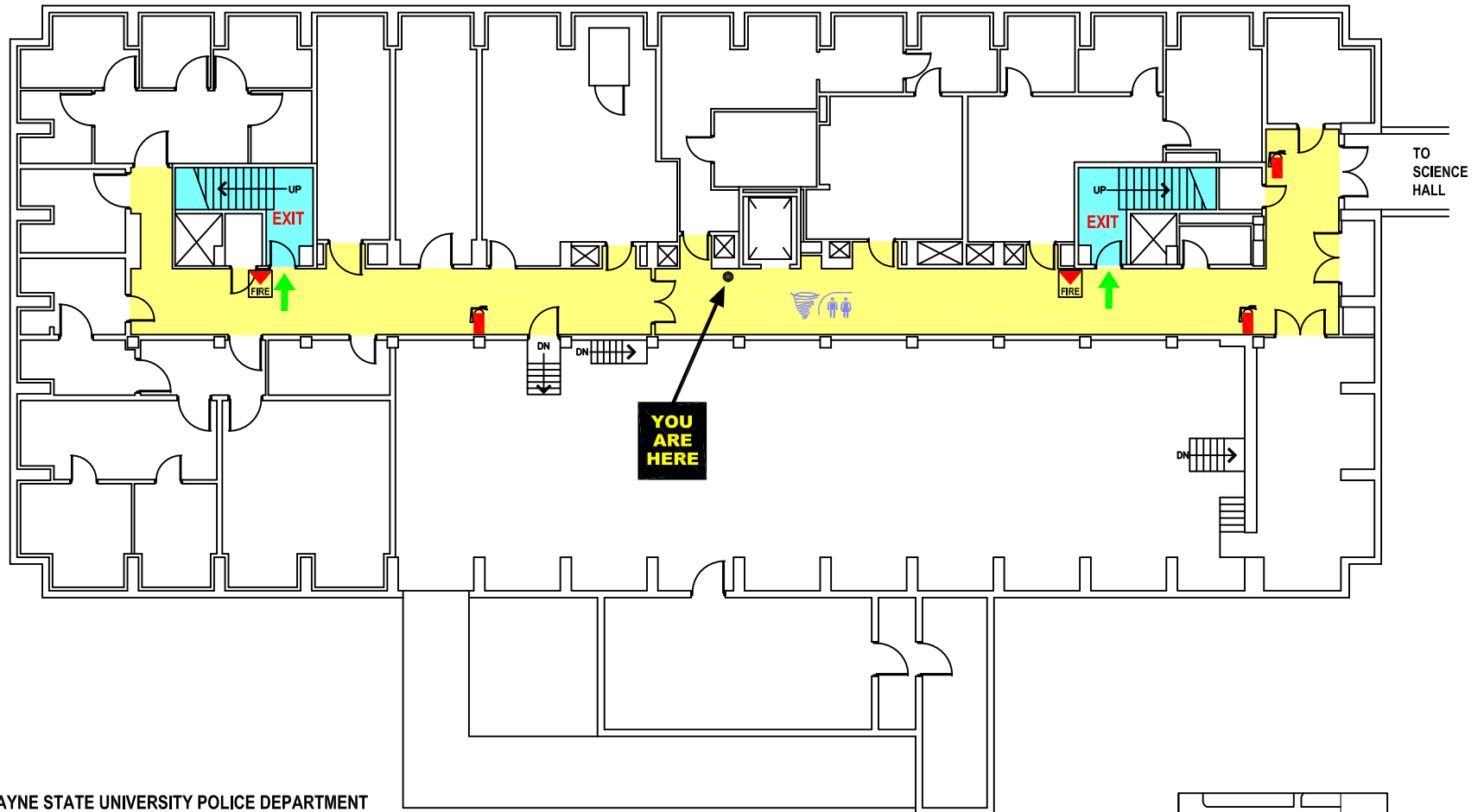








LIFE SCIENCES BUILDING

BASEMENT EVACUATION PLAN




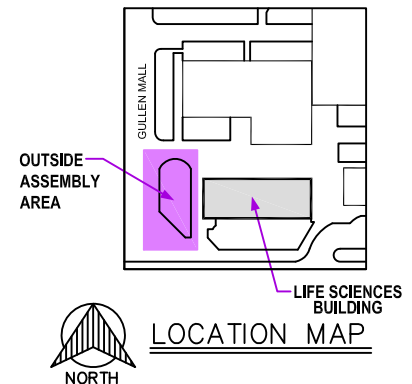
WAYNE STATE UNIVERSITY POLICE DEPARTMENT
EMERGENCY PHONE NUMBER
577-2222

KEY

- | | | | |
|---|---|---|---------------------|
|  | TO STAIRWELL EXIT
EXIT AT FIRST FLOOR |  | REST ROOMS |
|  | TORNADO SHELTER AREA |  | FIRE ALARM PULL BOX |
|  | STAIRWELL- AREA OF REFUGE |  | FIRE EXTINGUISHER |
|  | OUTSIDE ASSEMBLY AREA |  | CAMPUS PHONE |

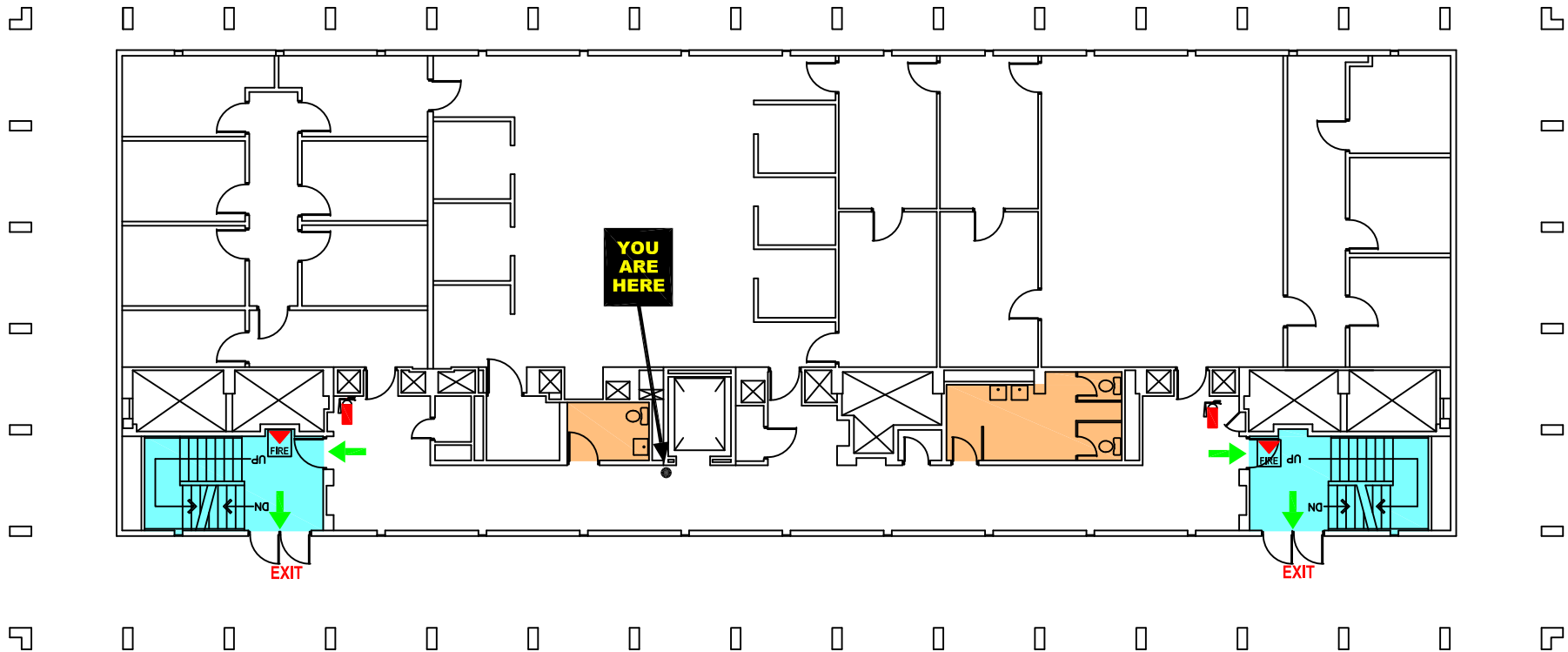
EMERGENCY GUIDELINES

- FAMILIARIZE YOURSELF WITH ALL  **EXIT** LOCATIONS.
- EVACUATE THE BUILDING WHEN THE FIRE ALARM IS ACTIVATED AND PROCEED TO THE **OUTSIDE ASSEMBLY AREA**.
- IN CASE OF FIRE, **DO NOT** USE THE ELEVATORS
- IN THE EVENT OF SEVERE WEATHER WARNING, PROCEED TO A DESIGNATED **TORNADO SHELTER AREA**, **RESTROOM** OR BASEMENT AS NECESSARY OR INSTRUCTED TO DO SO BY MANAGEMENT.



LIFE SCIENCES BUILDING









FIRST FLOOR EVACUATION PLAN




WAYNE STATE UNIVERSITY POLICE DEPARTMENT
EMERGENCY PHONE NUMBER

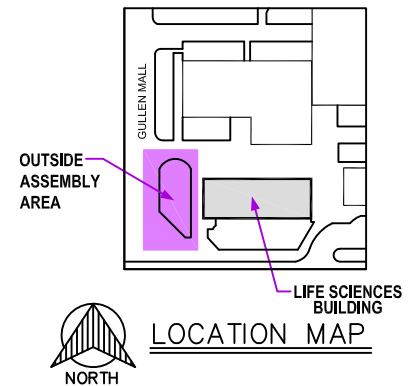
577-2222

KEY

- | | | | |
|---|---|---|---------------------|
|  | TO STAIRWELL EXIT
EXIT AT FIRST FLOOR |  | REST ROOMS |
|  | TORNADO SHELTER AREA |  | FIRE ALARM PULL BOX |
|  | STAIRWELL- AREA OF REFUGE |  | FIRE EXTINGUISHER |
|  | OUTSIDE ASSEMBLY AREA |  | CAMPUS PHONE |

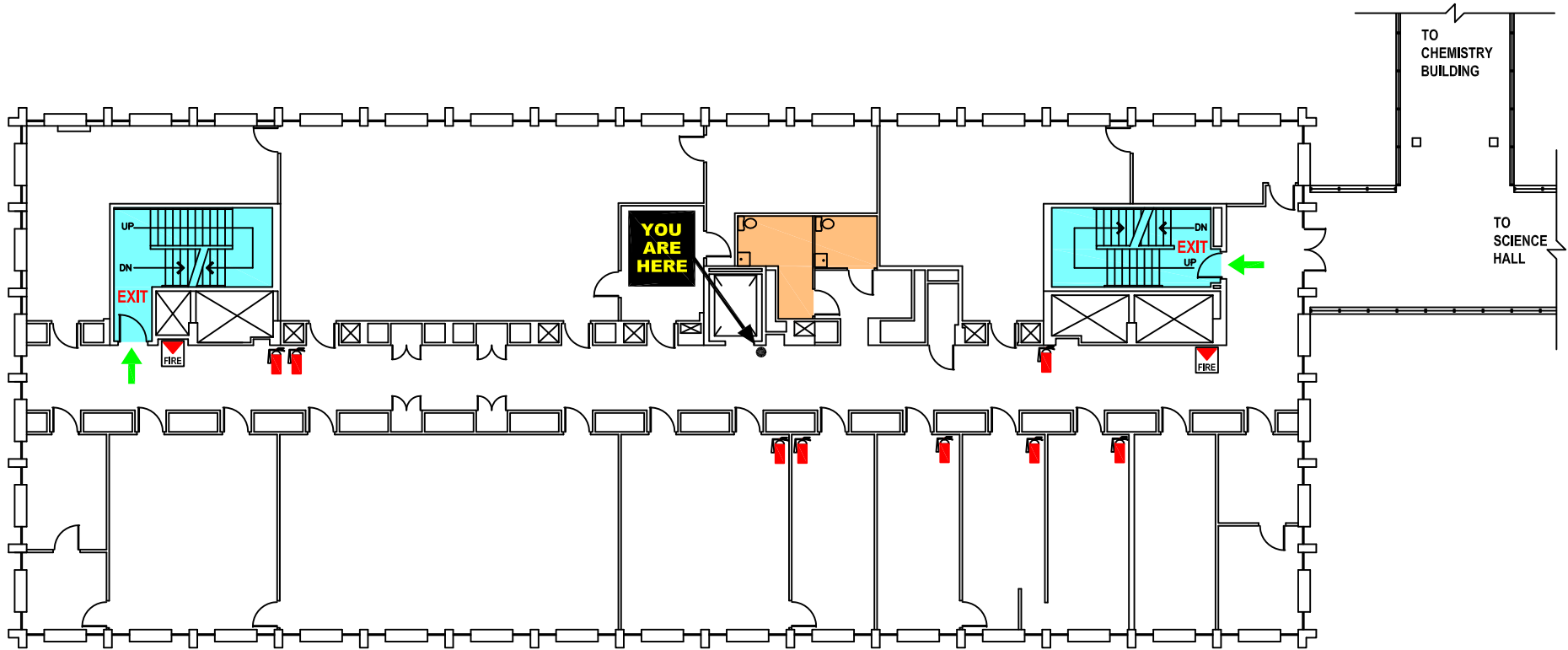
EMERGENCY GUIDELINES

- FAMILIARIZE YOURSELF WITH ALL  **EXIT** LOCATIONS.
- EVACUATE THE BUILDING WHEN THE FIRE ALARM IS ACTIVATED AND PROCEED TO THE **OUTSIDE ASSEMBLY AREA**.
- IN CASE OF FIRE, **DO NOT** USE THE ELEVATORS
- IN THE EVENT OF SEVERE WEATHER WARNING, PROCEED TO A DESIGNATED **TORNADO SHELTER AREA**, **RESTROOM** OR BASEMENT AS NECESSARY OR INSTRUCTED TO DO SO BY MANAGEMENT.



LIFE SCIENCES BUILDING






SECOND FLOOR EVACUATION PLAN




WAYNE STATE UNIVERSITY POLICE DEPARTMENT
EMERGENCY PHONE NUMBER

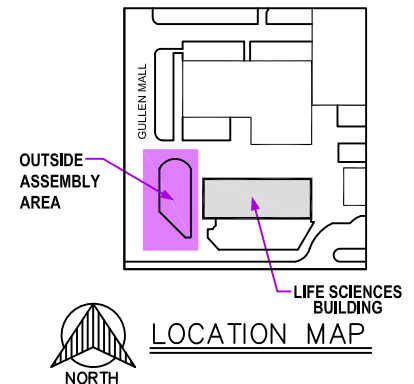
577-2222

KEY

- | | | | |
|---|---|---|---------------------|
|  | TO STAIRWELL EXIT
EXIT AT FIRST FLOOR |  | REST ROOMS |
|  | TORNADO SHELTER AREA |  | FIRE ALARM PULL BOX |
|  | STAIRWELL- AREA OF REFUGE |  | FIRE EXTINGUISHER |
|  | OUTSIDE ASSEMBLY AREA |  | CAMPUS PHONE |

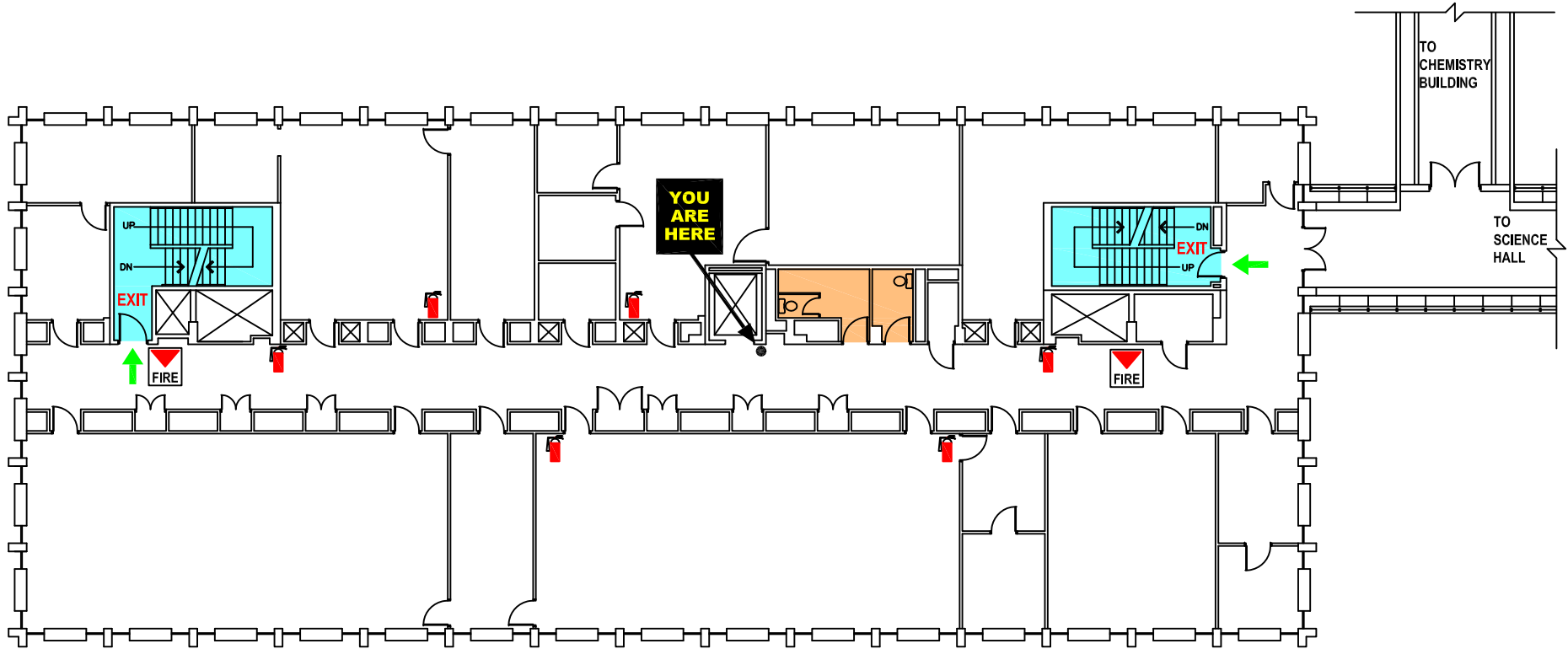
EMERGENCY GUIDELINES

- A. FAMILIARIZE YOURSELF WITH ALL  **EXIT** LOCATIONS.
- B. EVACUATE THE BUILDING WHEN THE FIRE ALARM IS ACTIVATED AND PROCEED TO THE **OUTSIDE ASSEMBLY AREA**.
- C. IN CASE OF FIRE, **DO NOT** USE THE ELEVATORS
- D. IN THE EVENT OF SEVERE WEATHER WARNING, PROCEED TO A DESIGNATED **TORNADO SHELTER AREA**, **RESTROOM** OR BASEMENT AS NECESSARY OR INSTRUCTED TO DO SO BY MANAGEMENT.



LIFE SCIENCES BUILDING







THIRD FLOOR EVACUATION PLAN




WAYNE STATE UNIVERSITY POLICE DEPARTMENT
EMERGENCY PHONE NUMBER

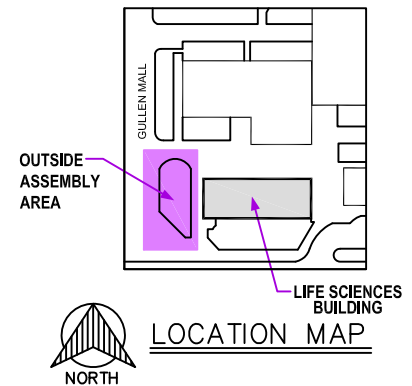
577-2222

KEY

- | | | | |
|---|---|---|---------------------|
|  | TO STAIRWELL EXIT
EXIT AT FIRST FLOOR |  | REST ROOMS |
|  | TORNADO SHELTER AREA |  | FIRE ALARM PULL BOX |
|  | STAIRWELL- AREA OF REFUGE |  | FIRE EXTINGUISHER |
|  | OUTSIDE ASSEMBLY AREA |  | CAMPUS PHONE |

EMERGENCY GUIDELINES

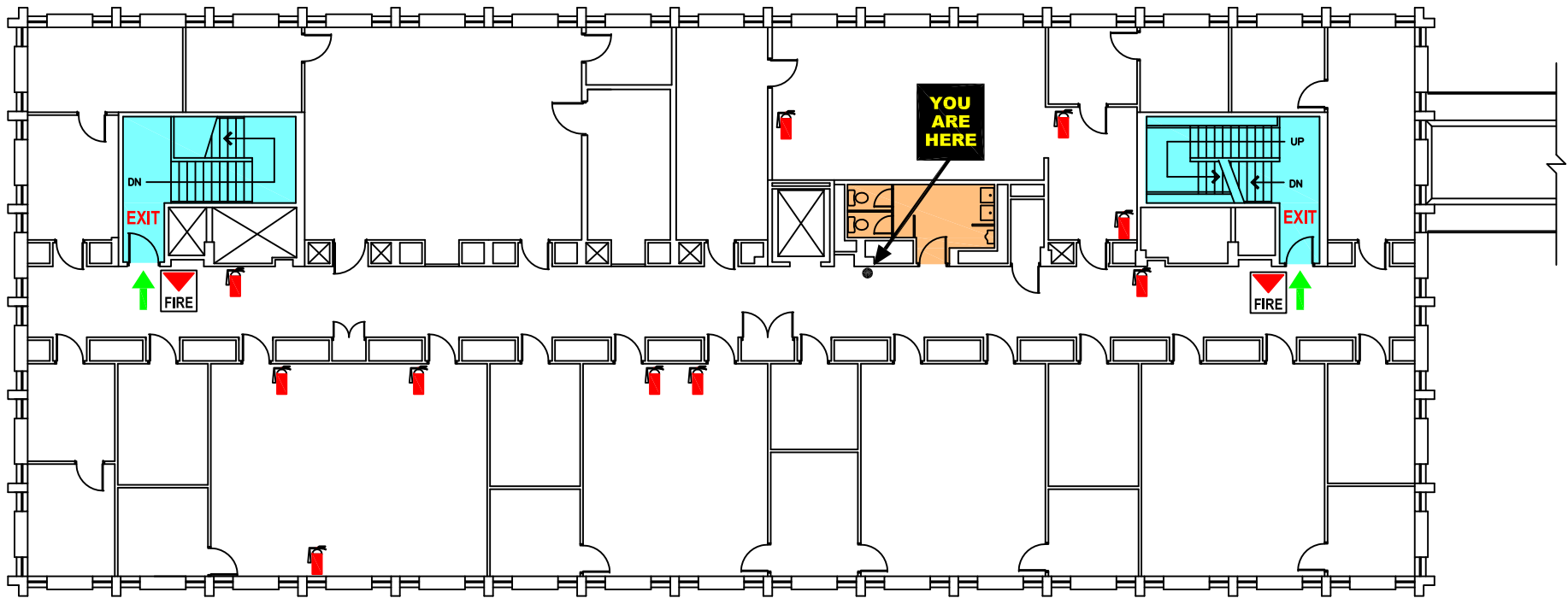
- A. FAMILIARIZE YOURSELF WITH ALL  **EXIT** LOCATIONS.
- B. EVACUATE THE BUILDING WHEN THE FIRE ALARM IS ACTIVATED AND PROCEED TO THE **OUTSIDE ASSEMBLY AREA.**
- C. IN CASE OF FIRE, **DO NOT** USE THE ELEVATORS
- D. IN THE EVENT OF SEVERE WEATHER WARNING, PROCEED TO A DESIGNATED **TORNADO SHELTER AREA**, **RESTROOM** OR BASEMENT AS NECESSARY OR INSTRUCTED TO DO SO BY MANAGEMENT.



LOCATION MAP

LIFE SCIENCES BUILDING









FOURTH FLOOR EVACUATION PLAN




WAYNE STATE UNIVERSITY POLICE DEPARTMENT
EMERGENCY PHONE NUMBER

577-2222

KEY

- | | | | |
|---|---|---|---------------------|
|  | TO STAIRWELL EXIT
EXIT AT FIRST FLOOR |  | REST ROOMS |
|  | TORNADO SHELTER AREA |  | FIRE ALARM PULL BOX |
|  | STAIRWELL- AREA OF REFUGE |  | FIRE EXTINGUISHER |
|  | OUTSIDE ASSEMBLY AREA |  | CAMPUS PHONE |

EMERGENCY GUIDELINES

- A. FAMILIARIZE YOURSELF WITH ALL  **EXIT** LOCATIONS.
- B. EVACUATE THE BUILDING WHEN THE FIRE ALARM IS ACTIVATED AND PROCEED TO THE **OUTSIDE ASSEMBLY AREA**.
- C. IN CASE OF FIRE, **DO NOT** USE THE ELEVATORS
- D. IN THE EVENT OF SEVERE WEATHER WARNING, PROCEED TO A DESIGNATED **TORNADO SHELTER AREA**, **RESTROOM** OR BASEMENT AS NECESSARY OR INSTRUCTED TO DO SO BY MANAGEMENT.

